

Cyclophilin B Rabbit mAb

货号: **AYM30021**

产品信息

反应	Human,Mouse,Rat
宿主	Rabbit
克隆性	Monoclonal
预测反应	
应用	WB
推荐浓度	WB: 1:500 - 1:2000
理论分子量	18kDa
实测分子量	18kDa
形式	Liquid
保存条件	Store at -20°C. Avoid freeze / thaw cycles. Buffer: PBS with 0.75% BSA,50% glycerol,pH7.3.
偶联物	Unconjugated
阳性对照	HeLa,HT-29,HepG2,Mouse liver,Mouse kidney,Mouse pancreas,Rat lung,Rat liver,Rat spleen
细胞定位	Endoplasmic reticulum lumen,Melanosome
纯化	Affinity purification

抗原信息

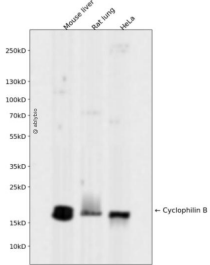
抗原信息	Recombinant fusion protein corresponding to Human Cyclophilin B .
序列	FMIQGGDFTRGDGTGGKSIYGERFPDENFKLKHYPGWVSMANAGKDTNGSQFFITTVKTAWLDGKHVVFQKVLGMEVVRKVESTKTDSDKPLKDVIIA

靶点信息

研究背景	The protein encoded by this gene is a cyclosporine-binding protein and is mainly located within the endoplasmic reticulum. It is associated with the secretory pathway and released in biological fluids. This protein can bind to cells derived from T- and B-lymphocytes, and may regulate cyclosporine A-mediated immunosuppression. Variants have been identified in this protein that give rise to recessive forms of osteogenesis imperfecta. [provided by RefSeq, Oct 2009]
基因ID	5479

基因名	PPIB
Swiss	P23284
别名	CYP-S1; CYPB; HEL-S-39; OI9; SCYLP

产品验证



Western blot analysis of Cyclophilin B expressed in Mouse liver,Rat lung,HeLa using Cyclophilin B Rabbit mAb at 1:1000. Secondary antibody: HRP Goat Anti-Rabbit IgG (H+L) at 1:5000. Lysates/proteins: 30ug per lane. Blocking buffer: 5% non-fat dry milk in TBST. Detection: ECL Enhanced Kit. Exposure time: 120s.

实验步骤

访问官网浏览详情: www.ablybio.cn