

Synaptophysin Rabbit mAb

货号: **AYM30020**

产品信息

| | |
|-------|---|
| 反应 | Human,Mouse,Rat |
| 宿主 | Rabbit |
| 克隆性 | Monoclonal |
| 预测反应 | |
| 应用 | WB IHC IF/ICC |
| 推荐浓度 | WB: 1:500 - 1:2000 IHC: 1:50 - 1:200 IF/ICC: 1:50 - 1:200 |
| 理论分子量 | 20kDa/33kDa |
| 实测分子量 | 38kDa |
| 形式 | Liquid |
| 保存条件 | Store at -20°C. Avoid freeze / thaw cycles. Buffer: PBS with 0.75% BSA,50% glycerol,pH7.3. |
| 偶联物 | Unconjugated |
| 阳性对照 | SH-SY5Y,Mouse lung,Mouse kidney,Rat lung |
| 细胞定位 | Cell junction,Cytoplasmic vesicle,Multi-pass membrane protein,secretory vesicle,synapse,synaptic vesicle membrane,synaptosome |
| 纯化 | Affinity purification |

抗原信息

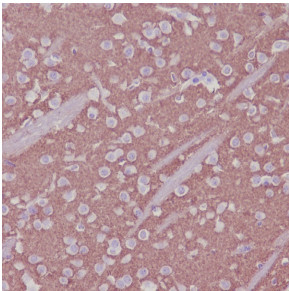
| | |
|------|---|
| 抗原信息 | Recombinant fusion protein corresponding to Human Synaptophysin . |
| 序列 | VFKETGWAAPFLRAPPGAPEKQPAPGDAYGDAGYGQGGYGPQDSYGPQGGYQPDYGPAGSGGSGYGPQGDYGGQGYGPQGAPTSFSNQM |

靶点信息

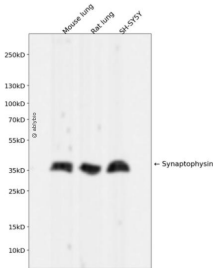
| | |
|------|--|
| 研究背景 | This gene encodes an integral membrane protein of small synaptic vesicles in brain and endocrine cells. The protein also binds cholesterol and is thought to direct targeting of vesicle-associated membrane protein 2 (synaptobrevin) to intracellular compartments. Mutations in this gene are associated with X-linked mental retardation (XLMR). |
|------|--|

| | |
|-------|------------------|
| 基因ID | 6855 |
| 基因名 | SYP |
| Swiss | P08247 |
| 别名 | MRX96;MRXSYP;SYP |

产品验证



Immunohistochemical analysis of paraffin-embedded mouse brain, using Synaptophysin Antibody .



Western blot analysis of Synaptophysin expressed in Mouse lung,Rat lung,SH-SY5Y using Synaptophysin Rabbit mAb at 1:1000. Secondary antibody: HRP Goat Anti-Rabbit IgG (H+L) at 1:5000 . Lysates/proteins: 30ug per lane. Blocking buffer: 5% non-fat dry milk in TBST. Detection: ECL Enhanced Kit. Exposure time: 120s.

实验步骤

访问官网浏览详情: www.ablybio.cn