

# PLCB1 Rabbit mAb

货号: **AYM30017**

## 产品信息

反应	Human,Mouse,Rat
宿主	Rabbit
克隆性	Monoclonal
预测反应	
应用	WB IHC
推荐浓度	<b>WB:</b> 1:500 - 1:2000 <b>IHC:</b> 1:50 - 1:200
理论分子量	133kDa/138kDa
实测分子量	100,150kDa
形式	Liquid
保存条件	Store at -20°C. Avoid freeze / thaw cycles. Buffer: PBS with 0.75% BSA,50% glycerol,pH7.3.
偶联物	Unconjugated
阳性对照	NCI-H460
细胞定位	Cytoplasm,Nucleus membrane
纯化	Affinity purification

## 抗原信息

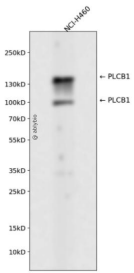
抗原信息	Recombinant fusion protein corresponding to Human PLCB1.
序列	KSFVKLQKKHYKEMKDLVLRHHKTTDLIKEHTTKYNEIQNDYLRRRAALEKSAKKDSKKKSEPPSPDHGSSTIEQDLAAL DAEMTQKLIDLKDKQQQLLNLNRQEYQYSEKYQKREHIKLLIQKLTDAECCQNNQLKKLKEICEKEKELKKKMDKKRQE KITEAKSKDKSQMEEKTEMIRSYIQEVVQYIKRLEEAQSKRQEKLVEKHKEIRQQILDEKPKLQVELEQEQDKFKRLPLEIL EFVQEAMKKGKISEDSNHGSAPLSLSSDPGKVNHKTPSSEELGGDIPGKEFDTPL

## 靶点信息

研究背景	The protein encoded by this gene catalyzes the formation of inositol 1,4,5-trisphosphate and diacylglycerol from phosphatidylinositol 4,5-bisphosphate. This reaction uses calcium as a cofactor and plays an important role in the intracellular transduction of many extracellular signals. This gene is activated by two G-protein alpha subunits, alpha-q and alpha-11. Two transcript variants encoding different isoforms have been found for this gene.
------	--

基因ID	23236
基因名	PLCB1
Swiss	Q9NQ66
别名	PLCB1;EIEE12;PI-PLC;PLC-154;PLC-I;PLC-beta-1;PLC154;PLCB1A;PLCB1B

## 产品验证



Western blot analysis of PLCB1 expressed in NCI-H460 using PLCB1 Rabbit mAb at 1:1000. Secondary anti body: HRP Goat Anti-Rabbit IgG (H+L) at 1:5000. Lysates/proteins: 30ug per lane. Blocking buffer: 5% no n-fat dry milk in TBST. Detection: ECL Enhanced Kit. Exposure time: 120s.

## 实验步骤

访问官网浏览详情: [www.ablybio.cn](http://www.ablybio.cn)