

TOP1 Rabbit mAb

货号: **AYM30011**

产品信息

反应	Human,Mouse
宿主	Rabbit
克隆性	Monoclonal
预测反应	
应用	WB IHC IF/ICC FC
推荐浓度	WB: 1:500 - 1:2000 IHC: 1:50 - 1:200 IF/ICC: 1:50 - 1:200 FC: 1:20 - 1:50
理论分子量	90kDa
实测分子量	91kDa
形式	Liquid
保存条件	Store at -20°C. Avoid freeze / thaw cycles. Buffer: PBS with 0.75% BSA,50% glycerol,pH7.3.
偶联物	Unconjugated
阳性对照	MCF7,SKOV3,SW480,Jurkat,HeLa,Mouse spleen,Mouse ovary
细胞定位	Nucleus,nucleolus,nucleoplasm
纯化	Affinity purification

抗原信息

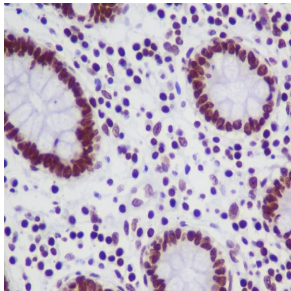
抗原信息	Recombinant fusion protein corresponding to Human TOP1.
序列	MSGDHLHNSQIEADFRNLNDSHKHKDKHKDREHRHKEHKKEKDREKSKHSNSEHKDSEKKHKEKEKTKHKDGSSEKH KDKHKDRDKEKRKEEKVRASGDA

靶点信息

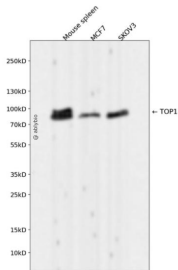
研究背景	This gene encodes a DNA topoisomerase, an enzyme that controls and alters the topologic states of DNA during transcription. This enzyme catalyzes the transient breaking and rejoining of a single strand of DNA which allows the strands to pass through one another, thus altering the topology of DNA. This gene is localized to chromosome 20 and has pseudogenes which reside on chromosomes 1 and 22.
------	---

基因ID	7150
基因名	TOP1
Swiss	P11387
别名	TOP1;TOPI

产品验证



Immunohistochemical analysis of paraffin-embedded human colon, using TOP1 Antibody.



Western blot analysis of TOP1 expressed in Mouse spleen, MCF7, SKOV3 using TOP1 Rabbit mAb at 1:1000. Secondary antibody: HRP Goat Anti-Rabbit IgG (H+L) at 1:5000. Lysates/proteins: 30 ug per lane. Blocking buffer: 5% non-fat dry milk in TBST. Detection: ECL Enhanced Kit. Exposure time: 120s.

实验步骤

访问官网浏览详情: www.ablybio.cn