

MCM2 Rabbit mAb

货号: **AYM30008**

产品信息

反应	Human
宿主	Rabbit
克隆性	Monoclonal
预测反应	
应用	WB IHC ICC IP FC
推荐浓度	WB: 1:500 - 1:2000 IHC: 1:50 - 1:200 ICC: 1:50 - 1:200 IP: 1:20 - 1:50 FC: 1:20 - 1:50
理论分子量	101kDa
实测分子量	125kDa
形式	Liquid
保存条件	Store at -20°C. Avoid freeze / thaw cycles. Buffer: PBS with 0.75% BSA,50% glycerol,pH7.3.
偶联物	Unconjugated
阳性对照	SW480,SH-SY5Y,Raji,A-549,HeLa,HL-60,Mouse thymus
细胞定位	Nucleus
纯化	Affinity purification

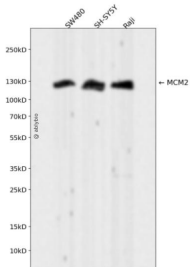
抗原信息

抗原信息	Recombinant fusion protein corresponding to Human MCM2.
序列	PFEVNMEETIQNYQRIRIQESPGKVAAGRLPRSKDAILLADLVDSCKPGDEIELTGIYHNNYDGS LNTANGFPVFATVILAN HVAKKDNKVAVGELTDEDVKMITSLSKDQQIGEKIFASIAPSIYGHEDIKRLALALFGGEPKNPGGKHKVVRGDINVLLCGD PGTAKSQFLKYIEKVSSRAIFTTGQGASAVGLTAYVQRHPVSRWTL EAGALVLADRGVCLIDEFDKMNDQDRTSIHEAM EQQSISISKAGIVTSLQARCTVIAAANPIGGRYDPSLTFSENVDLTEPIISRFDILCVVRDTPVQDEMLARFVVGSHVRHH PSNKEEGLANGS

靶点信息

研究背景	The protein encoded by this gene is one of the highly conserved mini-chromosome maintenance proteins (MCM) that are involved in the initiation of eukaryotic genome replication. The hexameric protein complex formed by MCM proteins is a key component of the pre-replication complex (pre_RC) and may be involved in the formation of replication forks and in the recruitment of other DNA replication related proteins. This protein forms a complex with MCM4, 6, and 7, and has been shown to regulate the helicase activity of the complex. This protein is phosphorylated, and thus regulated by, protein kinases CDC2 and CDC7. Multiple alternatively spliced transcript variants have been found, but the full-length nature of some variants has not been defined.
基因ID	4171
基因名	MCM2
Swiss	P49736
别名	MCM2;BM28;CCNL1;CDCL1;D3S3194;DFNA70;MITOTIN;cdc19

产品验证



Western blot analysis of MCM2 expressed in SW480,SH-SY5Y,Raji using MCM2 Rabbit mAb at 1:1000. Secondary antibody: HRP Goat Anti-Rabbit IgG (H+L) at 1:5000. Lysates/proteins: 30ug per lane. Blocking buffer: 5% non-fat dry milk in TBST. Detection: ECL Enhanced Kit. Exposure time: 120s.

实验步骤

访问官网浏览详情: www.ablybio.cn