

LRP1 Rabbit mAb

货号: **AYM30007**

产品信息

反应	Human,Mouse,Rat
宿主	Rabbit
克隆性	Monoclonal
预测反应	
应用	WB IHC IF/ICC IP FC
推荐浓度	WB: 1:500 - 1:2000 IHC: 1:50 - 1:200 IF/ICC: 1:50 - 1:200 IP: 1:20 - 1:50 FC: 1:20 - 1:50
理论分子量	85kDa
实测分子量	85kDa
形式	Liquid
保存条件	Store at -20°C. Avoid freeze / thaw cycles. Buffer: PBS with 0.75% BSA,50% glycerol,pH7.3.
偶联物	Unconjugated
阳性对照	U-87MG,Mouse lung,Mouse liver,Mouse brain,Rat lung,Rat liver,Rat brain
细胞定位	Cell membrane,Cytoplasm,Extracellular side,Membrane,Nucleus,Peripheral membrane protein,Single-pass type I membrane protein,coated pit
纯化	Affinity purification

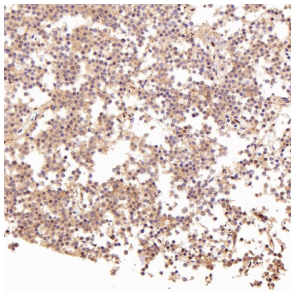
抗原信息

抗原信息	Recombinant fusion protein corresponding to Human LRP1.
序列	PPHMTGPRCEEHVFSQQQPGHIASILIPLLLLLLLLLVAGVVFVWYKRRVQGAKGFQHQRMNGAMNVEIGNPTYKMYEGG EPDDVGGLLDADFALDPDKPT

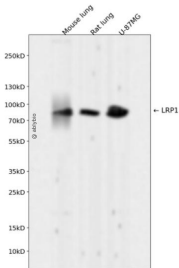
靶点信息

研究背景	This gene encodes a member of the low-density lipoprotein receptor family of proteins. The encoded preproprotein is proteolytically processed by furin to generate 515 kDa and 85 kDa subunits that form the mature receptor (PMID: 8546712). This receptor is involved in several cellular processes, including intracellular signaling, lipid homeostasis, and clearance of apoptotic cells. In addition, the encoded protein is necessary for the alpha 2-macroglobulin-mediated clearance of secreted amyloid precursor protein and beta-amyloid, the main component of amyloid plaques found in Alzheimer patients. Expression of this gene decreases with age and has been found to be lower than controls in brain tissue from Alzheimer's disease patients. [provided by RefSeq, Oct 2015]
基因ID	4035
基因名	LRP1
Swiss	Q07954
别名	A2MR; APOER; APR; CD91; IGFBP3R; KPA; LRP; LRP1A; TGFBR5

产品验证



Immunohistochemical analysis of paraffin-embedded Human pituitary tumor, using the Antibody at 1:300 dilution.



Western blot analysis of LRP1 expressed in Mouse lung, Rat lung, U-87MG using LRP1 Rabbit mAb at 1:1000. Secondary antibody: HRP Goat Anti-Rabbit IgG (H+L) at 1:5000. Lysates/proteins: 30ug per lane. Blocking buffer: 5% non-fat dry milk in TBST. Detection: ECL Enhanced Kit. Exposure time: 120s.

实验步骤

访问官网浏览详情: www.ablybio.cn