

Rad50 Rabbit mAb

货号: **AYM30002**

产品信息

反应	Human,Mouse,Rat
宿主	Rabbit
克隆性	Monoclonal
预测反应	
应用	WB IF/ICC
推荐浓度	WB: 1:500 - 1:2000 IF/ICC: 1:50 - 1:200
理论分子量	138kDa/153kDa/154kDa
实测分子量	154kDa
形式	Liquid
保存条件	Store at -20°C. Avoid freeze / thaw cycles. Buffer: PBS with 0.75% BSA,50% glycerol,pH7.3.
偶联物	Unconjugated
阳性对照	HeLa,K-562,U-937,Mouse testis,Mouse thymus,Rat testis
细胞定位	Chromosome,Nucleus,telomere
纯化	Affinity purification

抗原信息

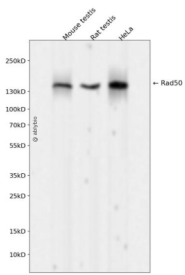
抗原信息	Recombinant fusion protein corresponding to Human Rad50.
序列	MSRIEKMSILGVRSFGIEDKDKQIIFFSPLTILVGPNGAGKTTIIIECLKYICTGDFPPGKGNFTFVHDPKVAQETDVRAQIRLQFRDVGELIAVQRSM

靶点信息

研究背景	The protein encoded by this gene is highly similar to <i>Saccharomyces cerevisiae</i> Rad50, a protein involved in DNA double-strand break repair. This protein forms a complex with MRE11 and NBS1. The protein complex binds to DNA and displays numerous enzymatic activities that are required for nonhomologous joining of DNA ends. This protein, cooperating with its partners, is important for DNA double-strand break repair, cell cycle checkpoint activation, telomere maintenance, and meiotic recombination. Knockout studies of the mouse homolog suggest this gene is essential for cell growth and viability. Mutations in this gene are the cause of Nijmegen breakage syndrome-like disorder.
------	--

基因ID	10111
基因名	RAD50
Swiss	Q92878
别名	RAD50;NBSLD;RAD502;hRad50

产品验证



Western blot analysis of Rad50 expressed in Mouse testis, Rat testis, HeLa using Rad50 Rabbit mAb at 1:1000. Secondary antibody: HRP Goat Anti-Rabbit IgG (H+L) at 1:5000. Lysates/proteins: 30ug per lane. Blocking buffer: 5% non-fat dry milk in TBST. Detection: ECL Enhanced Kit. Exposure time: 120s.

实验步骤

访问官网浏览详情: www.ablybio.cn