

# MCM2 Rabbit mAb

货号: **AYM30001**

## 产品信息

反应	Human,Mouse,Rat
宿主	Rabbit
克隆性	Monoclonal
预测反应	
应用	WB IHC IF/ICC
推荐浓度	<b>WB:</b> 1:500 - 1:2000 <b>IHC:</b> 1:50 - 1:200 <b>IF/ICC:</b> 1:50 - 1:200
理论分子量	28kDa/37kDa
实测分子量	102kDa
形式	Liquid
保存条件	Store at -20°C. Avoid freeze / thaw cycles. Buffer: PBS with 0.75% BSA,50% glycerol,pH7.3.
偶联物	Unconjugated
阳性对照	Mouse spleen,Rat lung,Rat spleen
细胞定位	Cytoplasm,Membrane,Mitochondrion,Nucleus,Single-pass membrane protein,nucleoplasm
纯化	Affinity purification

## 抗原信息

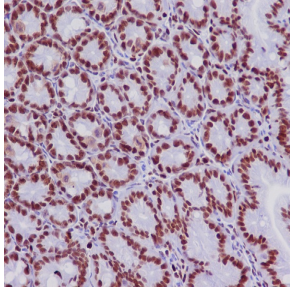
抗原信息	Recombinant fusion protein corresponding to Human MCM2.
序列	MFGLKRNAVIGLNLYCGGAGLGAGSGGATRPGGRLATEKEASARREIGGGEAGAVIGGSAGASPPSTLTPDSRRVARPP PIGAEVPDVTATPARLLFFA

## 靶点信息

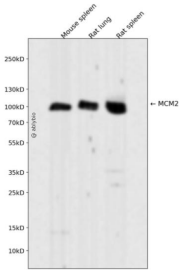
研究背景	This gene encodes an anti-apoptotic protein, which is a member of the Bcl-2 family. Alternative splicing results in multiple transcript variants. The longest gene product (isoform 1) enhances cell survival by inhibiting apoptosis while the alternatively spliced shorter gene products (isoform 2 and isoform 3) promote apoptosis and are death-inducing.
基因ID	4170

基因名	MCL1
Swiss	Q07820
别名	MCL1;BCL2L3;EAT;MCL1-ES;MCL1L;MCL1S;Mcl-1;TM;bcl2-L-3;mcl1/EAT;MCL1

## 产品验证



Immunohistochemical analysis of paraffin-embedded mouse colon, using MCM2 Antibody.



Western blot analysis of MCM2 expressed in Mouse spleen, Rat lung, Rat spleen using MCM2 Rabbit mAb at 1:1000. Secondary antibody: HRP Goat Anti-Rabbit IgG (H+L) at 1:5000. Lysates/proteins: 30ug per lane. Blocking buffer: 5% non-fat dry milk in TBST. Detection: ECL Enhanced Kit. Exposure time: 120s.

## 实验步骤

访问官网浏览详情: [www.ablybio.cn](http://www.ablybio.cn)