

NF2 / Merlin Rabbit mAb

货号: **AYM29999**

产品信息

反应	Human,Mouse,Rat
宿主	Rabbit
克隆性	Monoclonal
预测反应	
应用	WB IP
推荐浓度	WB: 1:500 - 1:2000 IP: 1:20 - 1:50
理论分子量	19-30kDa/59-72kDa
实测分子量	70kDa
形式	Liquid
保存条件	Store at -20°C. Avoid freeze / thaw cycles. Buffer: PBS with 0.75% BSA,50% glycerol,pH7.3.
偶联物	Unconjugated
阳性对照	U-251MG,Mouse brain,Mouse testis,PC-12,C6
细胞定位	Cell projection,Cytoplasm,Cytoplasmic granule,Cytoplasmic side,Nucleus,Nucleus,Peripheral membrane protein,cytoskeleton,filopodium membrane,perinuclear region,ruffle membrane
纯化	Affinity purification

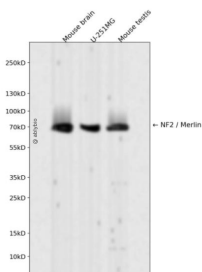
抗原信息

抗原信息	Recombinant fusion protein corresponding to Human NF2 / Merlin.
序列	LTPKISFPWNEIRNISYSKDKEFTIKPLDKKIDVFKFNSSKLRVNLKILQLCIGNHDLFMRRRKADSLEVQQMKAQAREEKARK QMERQRLAREKQMREEAERTRDELERRLLQMKEEATMANEALMRSEETADLLAEKAQITEEEAKLLAQKAAEAEQEMQRIK ATAIRTEEEKRLMEQKVLEAEVLALKMAEESERRAKEADQLKQDLQEAREAAERRAKQKLLLEIATKPTYPPMNPAPLPPDIPS FNLIGDSLSFDFKDTDMKRLSMEIEKEKVEYMEKSKHLQEQLNELKTEIEALKLKERETALDILHNENSDRGGSSKHNTIKKL TLQSAKSRVAFFEEL

靶点信息

研究背景	This gene encodes a protein that is similar to some members of the ERM (ezrin, radixin, moesin) family of proteins that are thought to link cytoskeletal components with proteins in the cell membrane. This gene product has been shown to interact with cell-surface proteins, proteins involved in cytoskeletal dynamics and proteins involved in regulating ion transport. This gene is expressed at high levels during embryonic development; in adults, significant expression is found in Schwann cells, meningeal cells, lens and nerve. Mutations in this gene are associated with neurofibromatosis type II which is characterized by nervous system and skin tumors and ocular abnormalities. Two predominant isoforms and a number of minor isoforms are produced by alternatively spliced transcripts.
基因ID	4771
基因名	NF2
Swiss	P35240
别名	NF2;ACN;BANF;SCH;merlin

产品验证



Western blot analysis of NF2 / Merlin expressed in Mouse brain,U-251MG,Mouse testis using NF2 / Merlin Rabbit mAb at 1:1000. Secondary antibody: HRP Goat Anti-Rabbit IgG (H+L) at 1:5000. Lysates/proteins: 30ug per lane. Blocking buffer: 5% non-fat dry milk in TBST. Detection: ECL Enhanced Kit. Exposure time: 120s.

实验步骤

访问官网浏览详情: www.ablybio.cn