

Integrin beta 1 Rabbit mAb

货号: **AYM29996**

产品信息

反应	Human,Mouse,Rat
宿主	Rabbit
克隆性	Monoclonal
预测反应	
应用	WB IHC
推荐浓度	WB: 1:500 - 1:2000 IHC: 1:50 - 1:200
理论分子量	87kDa/88kDa/91kDa
实测分子量	140kDa
形式	Liquid
保存条件	Store at -20°C. Avoid freeze / thaw cycles. Buffer: PBS with 0.75% BSA,50% glycerol,pH7.3.
偶联物	Unconjugated
阳性对照	A-431,U-87MG
细胞定位	Cell junction,Cell membrane,Cell projection,Cleavage furrow,Melanosome,Recycling endosome,Single-pass type I membrane protein,invadopodium membrane,lamellipodium,ruffle membrane,ruffle,sarcolemma
纯化	Affinity purification

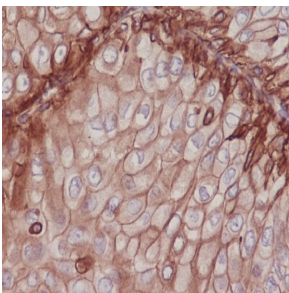
抗原信息

抗原信息	Recombinant fusion protein corresponding to Human Integrin beta 1.
序列	MNLQPIFWIGLISSVCCVFAQTDENRCLKANAKSCGECIQAGPNCGWCTNSTFLQEGMPTSARCDDEALKKKGCPPDDI ENPRGSKDIKKNKNTNRSKGTAEKLPEDITQIQPQQLVLRRLRSGEPQTFTLKFRAEDYPIDLYYLMDLSYSMKDDLENV KSLGTDLMNEMRRITSDFRIGFGSFVEKTVMPYISTTPAKLRNPCTSEQNCTSPFSYKNVLSLTNKGEVFNELVGKQRISGN LDSPEGGFDAIMQVAVCGSLIGWRNVTRLLVFSTDAGFHAFAGDGKLGIVLPNDGQCHLENNMYTMSHYDYPSIAHLV QKLENNIQTIFAVTEEFQPVYKELKNLIPKSAVGTLSANSSNVIQLIIDAYNSLSSEVILENGKLESEGVTSYKSYCKNGVNGT GENGRKCSNISIGDEVQFEISITSNKCPKDSDFKIRPLGFTEEEVILQYICECECQSEGIPSPKCHEGNGTFECGACRCN EGRVGRHCECSTDEVNSEDMDAYCRKENSSEICSNNGECVCGQCVCRRKRDNTNEIYSGKFCECDNFNCDRSNGLICGG NGVCKCRVCECNPNYTGSAACDCSLDTSTCEASNGQICNGRGICEGVCKCTDPKFQGTCEMCQTCLGVCAEHKECVQ CRAFNGKEKKTCTQECYSFNITKVESRDKLPQPVQDPVSHCKEKDVDDCWYFTYSVNGNNEVMVHVVENPECPGTP D

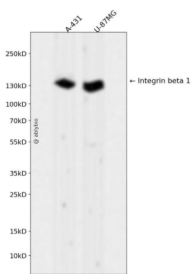
靶点信息

研究背景	Integrins are heterodimeric proteins made up of alpha and beta subunits. At least 18 alpha and 8 beta subunits have been described in mammals. Integrin family members are membrane receptors involved in cell adhesion and recognition in a variety of processes including embryogenesis, hemostasis, tissue repair, immune response and metastatic diffusion of tumor cells. This gene encodes a beta subunit. Multiple alternatively spliced transcript variants which encode different protein isoforms have been found for this gene.
基因ID	3688
基因名	ITGB1
Swiss	P05556
别名	CD29;FNRB;GPIIA;MDF2;MSK12;VLA-BETA;VLAB;Integrin beta 1;ITGB1;Integrin β 1

产品验证



Immunohistochemical analysis of paraffin-embedded human breast cancer, using Integrin beta 1 Antibody.



Western blot analysis of Integrin beta 1 expressed in A-431,U-87MG using Integrin beta 1 Rabbit mAb at 1:1000. Secondary antibody: HRP Goat Anti-Rabbit IgG (H+L) at 1:5000. Lysates/proteins: 30ug per lane. Blocking buffer: 5% non-fat dry milk in TBST. Detection: ECL Enhanced Kit. Exposure time: 120s.

实验步骤

访问官网浏览详情: www.ablybio.cn