

PCYT1A Rabbit mAb

货号: **AYM29982**

产品信息

反应	Human
宿主	Rabbit
克隆性	Monoclonal
预测反应	
应用	WB IF/ICC IP FC
推荐浓度	WB: 1:500 - 1:2000 IF/ICC: 1:50 - 1:200 IP: 1:20 - 1:50 FC: 1:20 - 1:50
理论分子量	
实测分子量	42kDa
形式	Liquid
保存条件	Store at -20°C. Avoid freeze / thaw cycles. Buffer: PBS with 0.75% BSA,50% glycerol,pH7.3.
偶联物	Unconjugated
阳性对照	HeLa,HepG2,Mouse testis,Mouse brain
细胞定位	cytosol,endoplasmic reticulum,glycogen granule,nuclear envelope,nucleus,plasma membrane
纯化	Affinity purification

抗原信息

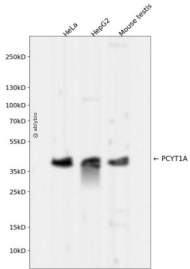
抗原信息	Recombinant fusion protein corresponding to Human PCYT1A.
序列	MDAQCSAKVNARKRRKEAPGPNNGATEEDGVPSKVQRCAVGLRQPAPFSDEIEVDFSKPYVRVTMEEASRGTPCERPVRV YADGIFDLFHS GHARALMQAK

靶点信息

研究背景	This gene belongs to the cytidyltransferase family and is involved in the regulation of phosphatidylcholine biosynthesis. Mutations in this gene are associated with spondylometaphyseal dysplasia with cone-rod dystrophy. Alternatively spliced transcript variants have been found for this gene.
基因ID	5130

基因名	PCYT1A
Swiss	P49585
别名	PCYT1A;CCTA;CT;CTA;CTPCT;PCYT1;SMDCRD

产品验证



Western blot analysis of PCYT1A expressed in HeLa, HepG2, Mouse testis using PCYT1A Rabbit mAb at 1:1000. Secondary antibody: HRP Goat Anti-Rabbit IgG (H+L) at 1:5000. Lysates/proteins: 30ug per lane. Blocking buffer: 5% non-fat dry milk in TBST. Detection: ECL Enhanced Kit. Exposure time: 120s.

实验步骤

访问官网浏览详情: www.ablybio.cn