

eEF1A1 Rabbit mAb

货号: **AYM29981**

产品信息

反应	Human,Mouse,Rat
宿主	Rabbit
克隆性	Monoclonal
预测反应	
应用	WB IHC IF/ICC IP FC
推荐浓度	WB: 1:500 - 1:2000 IHC: 1:50 - 1:200 IF/ICC: 1:50 - 1:200 IP: 1:20 - 1:50 FC: 1:20 - 1:50
理论分子量	47kDa/50kDa
实测分子量	50kDa
形式	Liquid
保存条件	Store at -20°C. Avoid freeze / thaw cycles. Buffer: PBS with 0.75% BSA,50% glycerol,pH7.3.
偶联物	Unconjugated
阳性对照	293T,MCF7,HeLa,Jurkat,HepG2,Mouse liver,Rat liver
细胞定位	Cytoplasm,Nucleus,nucleolus
纯化	Affinity purification

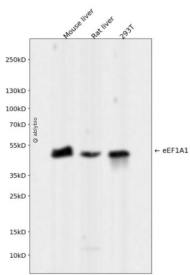
抗原信息

抗原信息	Recombinant fusion protein corresponding to Human eEF1A1.
序列	FEAGISKNGQTRHALLAYTLGVKQLIVGVNKMDSTEPYPYSQKRYEEIVKEVSTYIKKIGYNPDTVAFVPISGWNGDNMLEP SANMPWFKGWKVKTRKDGNASGTTLLEALDCILPPTTRPTDKPLRLPLQDVYKIGGIGTVPVGRVETGVLKPGMVVTFAPVN VTTEVKSVEMHHEALSEALPGDNVGFNVKNVSVKDVRRGNVAGDSKNDPPMEAAGFTAQVIILNHPGQISAGYAPVLDC HTAHIACKFAELKEKIDRRSGKKLEDGPKFLKSGDAAIVDMVPGKPMCVESFSDYPPLGRFAVRDMRQTVAVGVKAVDK KAAGAGKVTKSAQKAQKAK

靶点信息

研究背景	This gene encodes an isoform of the alpha subunit of the elongation factor-1 complex, which is responsible for the enzymatic delivery of aminoacyl tRNAs to the ribosome. This isoform (alpha 1) is expressed in brain, placenta, lung, liver, kidney, and pancreas, and the other isoform (alpha 2) is expressed in brain, heart and skeletal muscle. This isoform is identified as an autoantigen in 66% of patients with Felty syndrome. This gene has been found to have multiple copies on many chromosomes, some of which, if not all, represent different pseudogenes.
基因ID	1915
基因名	EEF1A1
Swiss	P68104
别名	EEF1A1;CCS-3;CCS3;EE1A1;EEF-1;EEF1A;EF-Tu;EF1A;GRAF-1EF;HNGC:16303;LENG7;PTI1;eEF1A-1

产品验证



Western blot analysis of eEF1A1 expressed in Mouse liver, Rat liver, 293T using eEF1A1 Rabbit mAb at 1:1000. Secondary antibody: HRP Goat Anti-Rabbit IgG (H+L) at 1:5000. Lysates/proteins: 30ug per lane. Blocking buffer: 5% non-fat dry milk in TBST. Detection: ECL Enhanced Kit. Exposure time: 120s.

实验步骤

访问官网浏览详情: www.ablybio.cn