

Alkaline Phosphatase Rabbit mAb

货号: **AYM29978**

产品信息

反应	Human,Mouse,Rat
宿主	Rabbit
克隆性	Monoclonal
预测反应	
应用	WB IHC ICC IP FC
推荐浓度	WB: 1:500 - 1:2000 IHC: 1:50 - 1:200 ICC: 1:50 - 1:200 IP: 1:20 - 1:50 FC: 1:20 - 1:50
理论分子量	57kDa
实测分子量	57kDa
形式	Liquid
保存条件	Store at -20°C. Avoid freeze / thaw cycles. Buffer: PBS with 0.75% BSA,50% glycerol,pH7.3.
偶联物	Unconjugated
阳性对照	HepG2,U-87MG,Mouse liver,Mouse kidney,Rat liver
细胞定位	Cell membrane,GPI-anchor,Lipid-anchor
纯化	Affinity purification

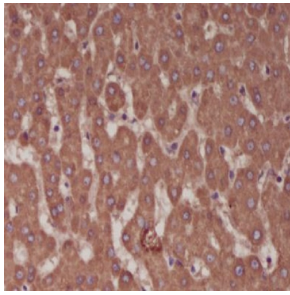
抗原信息

抗原信息	Recombinant fusion protein corresponding to Human Alkaline Phosphatase.
序列	MISPFVLVAIGTCLTNSLVPEKEKDPKYWRDQAQETLKYALELQKLNTNVAKNVIMFLGDGMGVSTVTAARILKGQLHHNP GEETRLEMDKFPFVALSKT

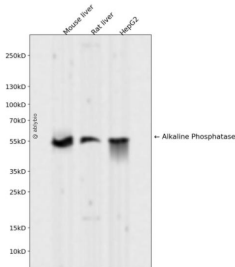
靶点信息

研究背景	This gene encodes a member of the alkaline phosphatase family of proteins. There are at least four distinct but related alkaline phosphatases: intestinal, placental, placental-like, and liver/bone/kidney (tissue non-specific). The first three are located together on chromosome 2, while the tissue non-specific form is located on chromosome 1. The product of this gene is a membrane bound glycosylated enzyme that is not expressed in any particular tissue and is, therefore, referred to as the tissue-nonspecific form of the enzyme. Alternative splicing results in multiple transcript variants, at least one of which encodes a preproprotein that is proteolytically processed to generate the mature enzyme. This enzyme may play a role in bone mineralization. Mutations in this gene have been linked to hypophosphatasia, a disorder that is characterized by hypercalcemia and skeletal defects. [provided by RefSeq, Oct 2015]
基因ID	249
基因名	ALPL
Swiss	P05186
别名	AP-TNAP; APTNAP; HOPS; TNAP; TNSALP

产品验证



Immunohistochemical analysis of paraffin-embedded human liver, using Alkaline Phosphatase Antibody.



Western blot analysis of Alkaline Phosphatase expressed in Mouse liver, Rat liver, HepG2 using Alkaline Phosphatase Rabbit mAb at 1:1000. Secondary antibody: HRP Goat Anti-Rabbit IgG (H+L) at 1:5000. Lysates/proteins: 30ug per lane. Blocking buffer: 5% non-fat dry milk in TBST. Detection: ECL Enhanced Kit. Exposure time: 120s.

实验步骤

访问官网浏览详情: www.ablybio.cn