

# TBX21 Rabbit mAb

货号: **AYM29970**

## 产品信息

反应	Human
宿主	Rabbit
克隆性	Monoclonal
预测反应	
应用	IHC FC
推荐浓度	<b>IHC:</b> 1:50 - 1:200 <b>FC:</b> 1:20 - 1:50
理论分子量	58kDa
实测分子量	58KDa
形式	Liquid
保存条件	Store at -20°C. Avoid freeze / thaw cycles. Buffer: PBS with 0.75% BSA,50% glycerol,pH7.3.
偶联物	Unconjugated
阳性对照	Rat lung
细胞定位	Nucleus
纯化	Affinity purification

## 抗原信息

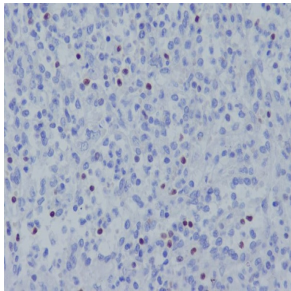
抗原信息	Recombinant fusion protein corresponding to Human TBX21.
序列	QFLGGDHYSPLLPNQYPVPSRFYPLPGQAKDVVPQAYWLGAPRDHSYEAEFRAVSMKPAFLPSAPGPTMSYYRGQEVLA

## 靶点信息

研究背景	This gene is a member of a phylogenetically conserved family of genes that share a common DNA-binding domain, the T-box. T-box genes encode transcription factors involved in the regulation of developmental processes. This gene is the human ortholog of mouse Tbx21/Tbet gene. Studies in mouse show that Tbx 21 protein is a Th1 cell-specific transcription factor that controls the expression of the hallmark Th1 cytokine, interferon-gamma (IFNG). Expression of the human ortholog also correlates with IFNG expression in Th1 and natural killer cells, suggesting a role for this gene in initiating Th1 lineage development from naive Th precursor cells.
------	--

基因ID	30009
基因名	TBX21
Swiss	Q9UL17
别名	TBX21;T-PET;T-bet;TBET;TBLYM;T-box 21

## 产品验证



Immunohistochemical analysis of paraffin-embedded human spleen, using TBX21 Antibody.

## 实验步骤

访问官网浏览详情: [www.ablybio.cn](http://www.ablybio.cn)