

SFPQ Rabbit mAb

货号: **AYM29962**

产品信息

反应	Human,Mouse,Rat
宿主	Rabbit
克隆性	Monoclonal
预测反应	
应用	WB IHC IF/ICC
推荐浓度	WB: 1:500 - 1:2000 IHC: 1:50 - 1:200 IF/ICC: 1:50 - 1:200
理论分子量	100kDa
实测分子量	100kDa
形式	Liquid
保存条件	Store at -20°C. Avoid freeze / thaw cycles. Buffer: PBS with 0.75% BSA,50% glycerol,pH7.3.
偶联物	Unconjugated
阳性对照	293F,HeLa
细胞定位	Cytoplasm,Nucleus matrix
纯化	Affinity purification

抗原信息

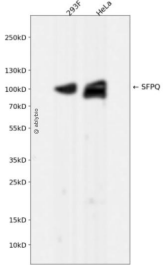
抗原信息	Recombinant fusion protein corresponding to Human SFPQ.
序列	MGYMDPRERDMRMGGGGAMNMGDPYSGGGQKFPPLGGGGGIGYEANPGVPPATMSGSMMSGDMRTERFGQGAG PVGQGPGRGMGPGTPAGYGRGREEYEGPNKKPRF

靶点信息

研究背景	DNA- and RNA binding protein, involved in several nuclear processes. Essential pre-mRNA splicing factor required early in spliceosome formation and for splicing catalytic step II, probably as a heteromer with NO NO. Binds to pre-mRNA in spliceosome C complex, and specifically binds to intronic polypyrimidine tracts. Involved in regulation of signal-induced alternative splicing.
基因ID	6421

基因名	SFPQ
Swiss	P23246
别名	POMP100; PPP1R140; PSF

产品验证



Western blot analysis of SFPQ expressed in 293F, HeLa using SFPQ Rabbit mAb at 1:1000. Secondary anti body: HRP Goat Anti-Rabbit IgG (H+L) at 1:5000. Lysates/proteins: 30ug per lane. Blocking buffer: 5% non-fat dry milk in TBST. Detection: ECL Enhanced Kit. Exposure time: 120s.

实验步骤

访问官网浏览详情: www.ablybio.cn