

# Myosin light chain kinase Rabbit mAb

货号: **AYM29960**

## 产品信息

反应	Human,Mouse,Rat
宿主	Rabbit
克隆性	Monoclonal
预测反应	
应用	WB IHC IF/ICC FC
推荐浓度	<b>WB:</b> 1:500 - 1:2000 <b>IHC:</b> 1:50 - 1:200 <b>IF/ICC:</b> 1:50 - 1:200 <b>FC:</b> 1:20 - 1:50
理论分子量	16kDa/80kDa/110kDa/197-210kDa
实测分子量	130kDa
形式	Liquid
保存条件	Store at -20°C. Avoid freeze / thaw cycles. Buffer: PBS with 0.75% BSA,50% glycerol,pH7.3.
偶联物	Unconjugated
阳性对照	HeLa,HepG2,HT-1080
细胞定位	Cell projection,Cleavage furrow,Cytoplasm,cytoskeleton,lamellipodium
纯化	Affinity purification

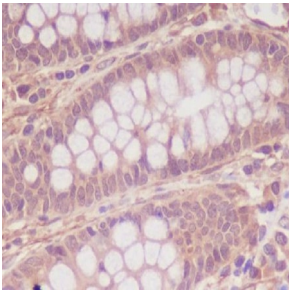
## 抗原信息

抗原信息	Recombinant fusion protein corresponding to Human Myosin light chain kinase.
序列	SGLSGRKSSTGSPTSPLNAEKLESEEDVSQAFLEAVAEKPHVKPYFSKTIRDLEVVESGAARFDCKIEGYDPPEVWFKD DQSIRESRHFQIDYDEDGNCSLIISDVCGDDDAKYTKAVNSLGEATCTAELIVETMEEGEGEGEEEE

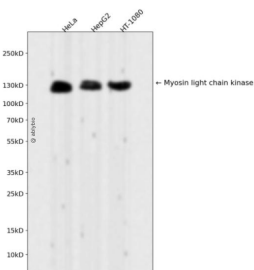
## 靶点信息

研究背景	This gene, a muscle member of the immunoglobulin gene superfamily, encodes myosin light chain kinase which is a calcium/calmodulin dependent enzyme. This kinase phosphorylates myosin regulatory light chains to facilitate myosin interaction with actin filaments to produce contractile activity. This gene encodes both smooth muscle and nonmuscle isoforms. In addition, using a separate promoter in an intron in the 3' region, it encodes telokin, a small protein identical in sequence to the C-terminus of myosin light chain kinase, that is independently expressed in smooth muscle and functions to stabilize unphosphorylated myosin filaments. A pseudogene is located on the p arm of chromosome 3. Four transcript variants that produce four isoforms of the calcium/calmodulin dependent enzyme have been identified as well as two transcripts that produce two isoforms of telokin. Additional variants have been identified but lack full length transcripts.
基因ID	4638
基因名	MYLK
Swiss	Q15746
别名	MYLK;AAT7;KRP;MLCK;MLCK1;MLCK108;MLCK210;MSTP083;MYLK1;smMLCK

## 产品验证



Immunohistochemical analysis of paraffin-embedded human colon, using Myosin light chain kinase Antibody.



Western blot analysis of Myosin light chain kinase expressed in HeLa, HepG2, HT-1080 using Myosin light chain kinase Rabbit mAb at 1:1000. Secondary antibody: HRP Goat Anti-Rabbit IgG (H+L) at 1:5000. Lysates/proteins: 30ug per lane. Blocking buffer: 5% non-fat dry milk in TBST. Detection: ECL Enhanced Kit. Exposure time: 120s.

## 实验步骤

访问官网浏览详情: [www.ablybio.cn](http://www.ablybio.cn)