

# Glypican 3 Rabbit mAb

货号: **AYM29958**

## 产品信息

|       |   |
|-------|---|
| 反应    | Human   |
| 宿主    | Rabbit  |
| 克隆性   | Monoclonal  |
| 预测反应  |   |
| 应用    | WB FC   |
| 推荐浓度  | <b>WB:</b> 1:500 - 1:2000<br><b>FC:</b> 1:20 - 1:50   |
| 理论分子量 | 59kDa/65kDa/68kDa   |
| 实测分子量 | 66kDa   |
| 形式    | Liquid  |
| 保存条件  | Store at -20°C. Avoid freeze / thaw cycles.<br>Buffer: PBS with 0.75% BSA,50% glycerol,pH7.3. |
| 偶联物   | Unconjugated  |
| 阳性对照  | Mouse lung,Rat kidney,Rat lung  |
| 细胞定位  | Cell membrane,Extracellular side,GPI-anchor,Lipid-anchor,Secreted,extracellular space         |
| 纯化    | Affinity purification   |

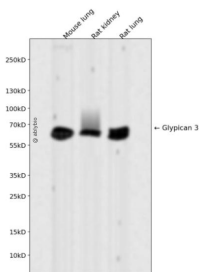
## 抗原信息

|      |   |
|------|---|
| 抗原信息 | Recombinant fusion protein corresponding to Human Glypican 3.   |
| 序列   | GRVLDKNLDEEGFESGDCGDDDEDECIGSGDGMKVKVKNQLRFLAELAYDLVDVDDAPGNSQQATPKDNEISTFHNLGNV<br>HSPLKLLTSMASVVCFFFLVH |

## 靶点信息

|       |  |
|-------|--|
| 研究背景  | Cell surface heparan sulfate proteoglycans are composed of a membrane-associated protein core substituted with a variable number of heparan sulfate chains. Members of the glypican-related integral membrane proteoglycan family (GRIPs) contain a core protein anchored to the cytoplasmic membrane via a glycosyl phosphatidylinositol linkage. These proteins may play a role in the control of cell division and growth regulation. The protein encoded by this gene can bind to and inhibit the dipeptidyl peptidase activity of CD26, and it can induce apoptosis in certain cell types. Deletion mutations in this gene are associated with Simpson-Golabi-Behmel syndrome, also known as Simpson dysmorphia syndrome. Alternative splicing results in multiple transcript variants. |
| 基因ID  | 2719   |
| 基因名   | GPC3   |
| Swiss | P51654   |
| 别名    | GPC3;DGSX;GTR2-2;MXR7;OCI-5;SDYS;SGB;SGBS;SGBS1;glypican-3   |

## 产品验证



Western blot analysis of Glypican 3 expressed in Mouse lung, Rat kidney, Rat lung using Glypican 3 Rabbit mAb at 1:1000. Secondary antibody: HRP Goat Anti-Rabbit IgG (H+L) at 1:5000. Lysates/proteins: 30ug per lane. Blocking buffer: 5% non-fat dry milk in TBST. Detection: ECL Enhanced Kit. Exposure time: 120s.

## 实验步骤

访问官网浏览详情: [www.ablybio.cn](http://www.ablybio.cn)