

CEACAM6 Rabbit mAb

货号: **AYM29954**

产品信息

反应	Human,Mouse,Rat
宿主	Rabbit
克隆性	Monoclonal
预测反应	
应用	WB IHC ICC IP
推荐浓度	WB: 1:500 - 1:2000 IHC: 1:50 - 1:200 ICC: 1:50 - 1:200 IP: 1:20 - 1:50
理论分子量	37kDa
实测分子量	37kDa
形式	Liquid
保存条件	Store at -20°C. Avoid freeze / thaw cycles. Buffer: PBS with 0.75% BSA,50% glycerol,pH7.3.
偶联物	Unconjugated
阳性对照	A-549,Mouse liver
细胞定位	apical plasma membrane,cell surface,extracellular space,plasma membrane
纯化	Affinity purification

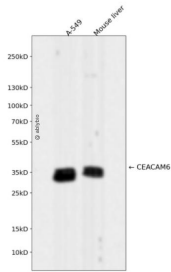
抗原信息

抗原信息	Recombinant fusion protein corresponding to Human CEACAM6.
序列	LTLLSVKRNDAGSYECEIQNPASANRSDPVTNLNVLYGPDVPTISPSKANYRPGENLNLSCHAASNPPAQYSWFINGTFQQS TQELFIPNITVNNSGSYMCQ

靶点信息

研究背景	This gene encodes a protein that belongs to the carcinoembryonic antigen (CEA) family whose members are glycosyl phosphatidyl inositol (GPI) anchored cell surface glycoproteins. Members of this family play a role in cell adhesion and are widely used as tumor markers in serum immunoassay determinations of carcinoma. This gene affects the sensitivity of tumor cells to adenovirus infection. The protein encoded by this gene acts as a receptor for adherent-invasive E. coli adhesion to the surface of ileal epithelial cells in patients with Crohn's disease. This gene is clustered with genes and pseudogenes of the cell adhesion molecules subgroup of the CEA family on chromosome 19. [provided by RefSeq, Apr 2014]
基因ID	4680
基因名	CEACAM6
Swiss	P40199
别名	CD66c; CEAL; NCA

产品验证



Western blot analysis of CEACAM6 expressed in A-549, Mouse liver using CEACAM6 Rabbit mAb at 1:1000. Secondary antibody: HRP Goat Anti-Rabbit IgG (H+L) at 1:5000. Lysates/proteins: 30ug per lane. Blocking buffer: 5% non-fat dry milk in TBST. Detection: ECL Enhanced Kit. Exposure time: 120s.

实验步骤

访问官网浏览详情: www.ablybio.cn