

Cdc25B Rabbit mAb

货号: **AYM29943**

产品信息

反应	Human
宿主	Rabbit
克隆性	Monoclonal
预测反应	
应用	WB IP
推荐浓度	WB: 1:500 - 1:2000 IP: 1:20 - 1:50
理论分子量	64kDa
实测分子量	64kDa
形式	Liquid
保存条件	Store at -20°C. Avoid freeze / thaw cycles. Buffer: PBS with 0.75% BSA, 50% glycerol, pH7.3.
偶联物	Unconjugated
阳性对照	HeLa, HepG2, Raji
细胞定位	Cytoplasm, centrosome, cytoskeleton, microtubule organizing center, spindle pole
纯化	Affinity purification

抗原信息

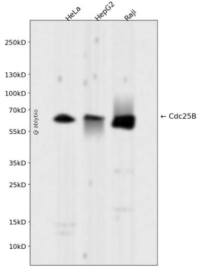
抗原信息	Recombinant fusion protein corresponding to Human Cdc25B.
序列	SSESSSDAGLCMDSPSPMDPHMAEQTFEQAIQAASRIIRNEQFAIRRFQSMPVRLLGHSPLRNITNSQAPDGRRKSEAGSGAASSSGEDKENDGFVFK

靶点信息

研究背景	CDC25B is a member of the CDC25 family of phosphatases. CDC25B activates the cyclin dependent kinase CDC2 by removing two phosphate groups and it is required for entry into mitosis. CDC25B shuttles between the nucleus and the cytoplasm due to nuclear localization and nuclear export signals. The protein is nuclear in the M and G1 phases of the cell cycle and moves to the cytoplasm during S and G2. CDC25B has oncogenic properties, although its role in tumor formation has not been determined. Multiple transcript variants for this gene exist. [provided by RefSeq, Jul 2008]
------	---

基因ID	994
基因名	CDC25B
Swiss	P30305
别名	CDC25B; cell division cycle 25B

产品验证



Western blot analysis of Cdc25B expressed in HeLa, HepG2, Raji using Cdc25B Rabbit mAb at 1:1000. Secondary antibody: HRP Goat Anti-Rabbit IgG (H+L) at 1:5000. Lysates/proteins: 30ug per lane. Blocking buffer: 5% non-fat dry milk in TBST. Detection: ECL Enhanced Kit. Exposure time: 120s.

实验步骤

访问官网浏览详情: www.ablybio.cn