

CRMP2 Rabbit mAb

货号: **AYM29935**

产品信息

反应	Human,Mouse,Rat
宿主	Rabbit
克隆性	Monoclonal
预测反应	
应用	WB IHC IF/ICC IP FC
推荐浓度	WB: 1:500 - 1:2000 IHC: 1:50 - 1:200 IF/ICC: 1:50 - 1:200 IP: 1:20 - 1:50 FC: 1:20 - 1:50
理论分子量	58kDa/62kDa
实测分子量	62kDa
形式	Liquid
保存条件	Store at -20°C. Avoid freeze / thaw cycles. Buffer: PBS with 0.75% BSA,50% glycerol,pH7.3.
偶联物	Unconjugated
阳性对照	HepG2,U-251MG,293T
细胞定位	Cytoplasm,Membrane,cytoskeleton,cytosol
纯化	Affinity purification

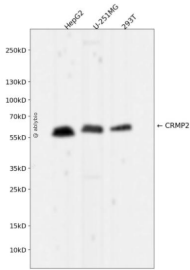
抗原信息

抗原信息	Recombinant fusion protein corresponding to Human CRMP2.
序列	RIAVGSDADLVIWDPDSVKTISAKTHNSSLEYNIFEGMECRGSPVVISQGKIVLEDGTLHVTEGSGRYIPRKPFDFVYKRIKARSRLAELRGVPRGLYD

靶点信息

研究背景	This gene encodes a member of the collapsin response mediator protein family. Collapsin response mediator proteins form homo- and hetero-tetramers and facilitate neuron guidance, growth and polarity. The encoded protein promotes microtubule assembly and is required for Sema3A-mediated growth cone collapse, and also plays a role in synaptic signaling through interactions with calcium channels. This gene has been implicated in multiple neurological disorders, and hyperphosphorylation of the encoded protein may play a key role in the development of Alzheimer's disease. Alternatively spliced transcript variants encoding multiple isoforms have been observed for this gene.
基因ID	1808
基因名	DPYSL2
Swiss	Q16555
别名	DPYSL2;CRMP-2;CRMP2;DHPRP2;DRP-2;DRP2;N2A3;ULIP-2;ULIP2

产品验证



Western blot analysis of CRMP2 expressed in HepG2,U-251MG,293T using CRMP2 Rabbit mAb at 1:1000. Secondary antibody: HRP Goat Anti-Rabbit IgG (H+L) at 1:5000. Lysates/proteins: 30ug per lane. Blocking buffer: 5% non-fat dry milk in TBST. Detection: ECL Enhanced Kit. Exposure time: 120s.

实验步骤

访问官网浏览详情: www.ablybio.cn