

NR2E1 Rabbit mAb

货号: **AYM29933**

产品信息

反应	Human,Mouse,Rat
宿主	Rabbit
克隆性	Monoclonal
预测反应	
应用	WB
推荐浓度	WB: 1:500 - 1:2000
理论分子量	48kDa
实测分子量	48kDa
形式	Liquid
保存条件	Store at -20°C. Avoid freeze / thaw cycles. Buffer: PBS with 0.75% BSA,50% glycerol,pH7.3.
偶联物	Unconjugated
阳性对照	SH-SY5Y,U-251MG,U-87MG,Mouse brain,Rat brain
细胞定位	Nucleus
纯化	Affinity purification

抗原信息

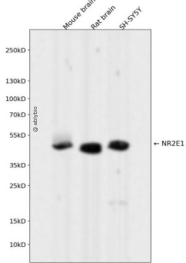
抗原信息	Recombinant fusion protein corresponding to Human NR2E1.
序列	MSKPAGSTSRILDIPCKVCGDRSSGKHYGVYACDGCSGFFKRSIRRNRTYVCKSGNQGGCPVDKTHRNQCACRLKKCL EVNMNKDAVQHERGPRTSTIR

靶点信息

研究背景	The protein encoded by this gene is an orphan receptor involved in retinal development. The encoded protein also regulates adult neural stem cell proliferation and may be involved in control of aggressive behavior. Two transcript variants encoding different isoforms have been found for this gene. [provided by RefSeq, Aug 2015]
基因ID	7101

基因名	NR2E1
Swiss	Q9Y466
别名	TLL; TLX; XTLL

产品验证



Western blot analysis of NR2E1 expressed in Mouse brain,Rat brain,SH-SY5Y using NR2E1 Rabbit mAb at 1:1000. Secondary antibody: HRP Goat Anti-Rabbit IgG (H+L) at 1:5000. Lysates/proteins: 30ug per lane. Blocking buffer: 5% non-fat dry milk in TBST. Detection: ECL Enhanced Kit. Exposure time: 120s.

实验步骤

访问官网浏览详情: www.ablybio.cn