

Tin2 Rabbit mAb

货号: **AYM29929**

产品信息

反应	Human,Mouse,Rat
宿主	Rabbit
克隆性	Monoclonal
预测反应	
应用	WB
推荐浓度	WB: 1:500 - 1:2000
理论分子量	15kDa/39kDa/50kDa
实测分子量	40kDa
形式	Liquid
保存条件	Store at -20°C. Avoid freeze / thaw cycles. Buffer: PBS with 0.75% BSA,50% glycerol,pH7.3.
偶联物	Unconjugated
阳性对照	MCF7,HepG2,Mouse skeletal muscle,Mouse heart
细胞定位	Chromosome,Nucleus,Nucleus matrix,telomere
纯化	Affinity purification

抗原信息

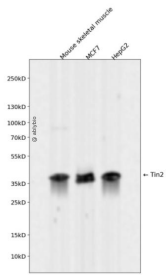
抗原信息	Recombinant fusion protein corresponding to Human Tin2.
序列	ECSVTDSVNLAEPMEQNPPQQRLALHNPLKAKPGTHLPQGPSSRTHPEPLAGRHFNLAPLGRRRVQSQWASTRGGH KERPTVMLFPFRNLGSPTQVISKPESKEEHAIYTADLAMGTRAASTGKSKSPCQTLGGRALKENPVDLPATEQKENCLDCY MDPLRLSLLPPRARKPVCPPSLCSSVITIGDLVLDSDEEENGQEGEKESLENYQTKFDTLIPTLCEYLPPSGHGAIPVSSCD CRDSSRPL

靶点信息

研究背景	This gene encodes one of the proteins of the shelterin, or telosome, complex which protects telomeres by allowing the cell to distinguish between telomeres and regions of DNA damage. The protein encoded by this gene is a critical part of shelterin; it interacts with the three DNA-binding proteins of the shelterin complex, and it is important for assembly of the complex. Mutations in this gene cause dyskeratosis congenita (DKC), an inherited bone marrow failure syndrome.
------	--

基因ID	26277
基因名	TINF2
Swiss	Q9BSI4
别名	TINF2;DKCA3;TIN2

产品验证



Western blot analysis of Tin2 expressed in Mouse skeletal muscle, MCF7, HepG2 using Tin2 Rabbit mAb at 1:1000. Secondary antibody: HRP Goat Anti-Rabbit IgG (H+L) at 1:5000. Lysates/proteins: 30ug per lane. Blocking buffer: 5% non-fat dry milk in TBST. Detection: ECL Enhanced Kit. Exposure time: 120s.

实验步骤

访问官网浏览详情: www.ablybio.cn