

RAB8A Rabbit mAb

货号: **AYM29919**

产品信息

反应	Human,Mouse,Rat
宿主	Rabbit
克隆性	Monoclonal
预测反应	
应用	WB IHC IF/ICC FC
推荐浓度	WB: 1:500 - 1:2000 IHC: 1:50 - 1:200 IF/ICC: 1:50 - 1:200 FC: 1:20 - 1:50
理论分子量	23kDa
实测分子量	24kDa
形式	Liquid
保存条件	Store at -20°C. Avoid freeze / thaw cycles. Buffer: PBS with 0.75% BSA,50% glycerol,pH7.3.
偶联物	Unconjugated
阳性对照	HeLa,HCT116
细胞定位	Cell membrane,Cell projection,Cytoplasm,Cytoplasmic side,Cytoplasmic vesicle,Golgi apparatus,Lipid-anchored,Recycling endosome membrane,centriole,centrosome,cilium,cilium basal body,cytoskeleton,microtubule organizing center,phagosome,phagosome membrane
纯化	Affinity purification

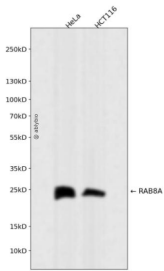
抗原信息

抗原信息	Recombinant fusion protein corresponding to Human RAB8A.
序列	RNWIRNIEEHASADVEKMILGNKCDVNDKRQVSKERGEKLALDYGIKFMETSAKANINVENAFFTLARDIKAKMDKKLEGN SPQGSNQGKIPDQQRSSFFRCVLL

靶点信息

研究背景	The protein encoded by this gene is a member of the RAS superfamily which are small GTP/GDP-binding proteins with an average size of 200 amino acids. The RAS-related proteins of the RAB/YPT family may play a role in the transport of proteins from the endoplasmic reticulum to the Golgi and the plasma membrane. This protein shares 97%, 96%, and 51% similarity with the dog RAB8, mouse MEL, and mouse YPT1 proteins, respectively and contains the 4 GTP/GDP-binding sites that are present in all the RAS proteins. The putative effector-binding site of this protein is similar to that of the RAB/YPT proteins. However, this protein contains a C-terminal CAAX motif that is characteristic of many RAS superfamily members but which is not found in YPT1 and the majority of RAB proteins. Although this gene was isolated as a transforming gene from a melanoma cell line, no linkage between MEL and malignant melanoma has been demonstrable. This oncogene is located 800 kb distal to MY09B on chromosome 19p13.1.
基因ID	4218
基因名	RAB8A
Swiss	P61006
别名	RAB8A;MEL;RAB8

产品验证



Western blot analysis of RAB8A expressed in HeLa, HCT116 using RAB8A Rabbit mAb at 1:1000. Secondary antibody: HRP Goat Anti-Rabbit IgG (H+L) at 1:5000. Lysates/proteins: 30ug per lane. Blocking buffer: 5% non-fat dry milk in TBST. Detection: ECL Enhanced Kit. Exposure time: 120s.

实验步骤

访问官网浏览详情: www.ablybio.cn