

# HP1 alpha Rabbit mAb

货号: **AYM29917**

## 产品信息

反应	Human,Mouse,Rat
宿主	Rabbit
克隆性	Monoclonal
预测反应	
应用	WB IHC IF/ICC IP FC
推荐浓度	<b>WB:</b> 1:500 - 1:2000 <b>IHC:</b> 1:50 - 1:200 <b>IF/ICC:</b> 1:50 - 1:200 <b>IP:</b> 1:20 - 1:50 <b>FC:</b> 1:20 - 1:50
理论分子量	22kDa
实测分子量	22kDa
形式	Liquid
保存条件	Store at -20°C. Avoid freeze / thaw cycles. Buffer: PBS with 0.75% BSA,50% glycerol,pH7.3.
偶联物	Unconjugated
阳性对照	HeLa,SH-SY5Y,A-549,MCF7
细胞定位	Chromosome,Nucleus,centromere
纯化	Affinity purification

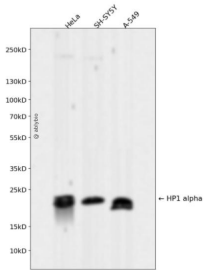
## 抗原信息

抗原信息	Recombinant fusion protein corresponding to Human HP1 alpha .
序列	MGKKTkRTADSSSEDEEEYVVEKVLDRRVVKGQVEYLLKWKGFSEEHNTWEPEKNLDCPELISEFMKYYKKMKEGENN KPREKSESNKRSNFSNSADDIKSKKKREQSNDIARGFERGLEPEKIIGATDSCGDLMLMKWKDTDEADLVLAKEANVK CPQIVIAFYEERLTWHAYPEDAENKEKETAKS

## 靶点信息

研究背景	This gene encodes a highly conserved nonhistone protein, which is a member of the heterochromatin protein family. The protein is enriched in the heterochromatin and associated with centromeres. The protein has a single N-terminal chromodomain which can bind to histone proteins via methylated lysine residues, and a C-terminal chromo shadow-domain (CSD) which is responsible for the homodimerization and interaction with a number of chromatin-associated nonhistone proteins. The encoded product is involved in the formation of functional kinetochore through interaction with essential kinetochore proteins. The gene has a pseudogene located on chromosome 3. Multiple alternatively spliced variants, encoding the same protein, have been identified.
基因ID	23468
基因名	CBX5
Swiss	P45973
别名	CBX5;HEL25;HP1;HP1A

## 产品验证



Western blot analysis of HP1 alpha expressed in HeLa, SH-SY5Y, A-549 using HP1 alpha Rabbit mAb at 1:1000. Secondary antibody: HRP Goat Anti-Rabbit IgG (H+L) at 1:5000. Lysates/proteins: 30ug per lane. Blocking buffer: 5% non-fat dry milk in TBST. Detection: ECL Enhanced Kit. Exposure time: 120s.

## 实验步骤

访问官网浏览详情: [www.ablybio.cn](http://www.ablybio.cn)