

GABARAPL2 Rabbit mAb

货号: **AYM29915**

产品信息

反应	Human,Mouse,Rat
宿主	Rabbit
克隆性	Monoclonal
预测反应	
应用	WB
推荐浓度	WB: 1:500 - 1:2000
理论分子量	13kDa
实测分子量	14kDa
形式	Liquid
保存条件	Store at -20°C. Avoid freeze / thaw cycles. Buffer: PBS with 0.75% BSA,50% glycerol,pH7.3.
偶联物	Unconjugated
阳性对照	293T,Raji,Mouse brain,Mouse thymus
细胞定位	Cytoplasmic vesicle,Golgi apparatus,autophagosome
纯化	Affinity purification

抗原信息

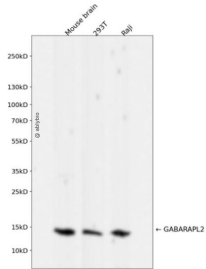
抗原信息	Recombinant fusion protein corresponding to Human GABARAPL2.
序列	MKWMFKEDHSLEHRCVESAKIRAKYPDRVPVIVEKVSGSQIVDIDKRKYL

靶点信息

研究背景	Ubiquitin-like modifier involved in intra-Golgi traffic (By similarity. Modulates intra-Golgi transport through coupling between NSF activity and SNAREs activation (By similarity. It first stimulates the ATPase activity of NSF which in turn stimulates the association with GOSR1 (By similarity. Involved in autophagy. Plays a role in mitophagy which contributes to regulate mitochondrial quantity and quality by eliminating the mitochondria to a basal level to fulfill cellular energy requirements and preventing excess ROS production. Whereas LC3s are involved in elongation of the phagophore membrane, the GABARAP/GATE-16 subfamily is essential for a later stage in autophagosome maturation.
基因ID	11345

基因名	GABARAPL2
Swiss	P60520
别名	GABARAPL2;ATG8;ATG8C;GATE-16;GATE16;GEF-2;GEF2

产品验证



Western blot analysis of GABARAPL2 expressed in Mouse brain,293T,Raji using GABARAPL2 Rabbit m Ab at 1:1000. Secondary antibody: HRP Goat Anti-Rabbit IgG (H+L) at 1:5000. Lysates/proteins: 30ug per lane. Blocking buffer: 5% non-fat dry milk in TBST. Detection: ECL Enhanced Kit. Exposure time: 1 20s.

实验步骤

访问官网浏览详情: www.ablybio.cn