

Exportin2 Rabbit mAb

货号: **AYM29905**

产品信息

反应	Human,Mouse
宿主	Rabbit
克隆性	Monoclonal
预测反应	
应用	WB IHC IF/ICC FC
推荐浓度	WB: 1:500 - 1:2000 IHC: 1:50 - 1:200 IF/ICC: 1:50 - 1:200 FC: 1:20 - 1:50
理论分子量	22kDa/103kDa/107kDa/110kDa
实测分子量	98kDa
形式	Liquid
保存条件	Store at -20°C. Avoid freeze / thaw cycles. Buffer: PBS with 0.75% BSA,50% glycerol,pH7.3.
偶联物	Unconjugated
阳性对照	B cells,U-87MG,LO2,BT-474
细胞定位	Cytoplasm,Nucleus
纯化	Affinity purification

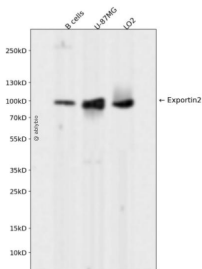
抗原信息

抗原信息	Recombinant fusion protein corresponding to Human Exportin2.
序列	LEKSQDNVIKVCASVTFKNIYIKRNWRIVEDEPNKICEADRVAIKANIVHMLSSPEQIQKQLSDAISIIIGREDFPQKWPDLLTE MVNRFQSGDFHVGVL

靶点信息

研究背景	Proteins that carry a nuclear localization signal (NLS) are transported into the nucleus by the importin-alpha/beta heterodimer. Importin-alpha binds the NLS, while importin-beta mediates translocation through the nuclear pore complex. After translocation, RanGTP binds importin-beta and displaces importin-alpha. Importin-alpha must then be returned to the cytoplasm, leaving the NLS protein behind. The protein encoded by this gene binds strongly to NLS-free importin-alpha, and this binding is released in the cytoplasm by the combined action of RANBP1 and RANGAP1. In addition, the encoded protein may play a role both in apoptosis and in cell proliferation. Alternatively spliced transcript variants have been found for this gene.
基因ID	1434
基因名	CSE1L
Swiss	P55060
别名	CSE1L;CAS;CSE1;XPO2

产品验证



Western blot analysis of Exportin2 expressed in B cells,U-87MG,LO2 using Exportin2 Rabbit mAb at 1:1000. Secondary antibody: HRP Goat Anti-Rabbit IgG (H+L) at 1:5000. Lysates/proteins: 30ug per lane. Blocking buffer: 5% non-fat dry milk in TBST. Detection: ECL Enhanced Kit. Exposure time: 120s.

实验步骤

访问官网浏览详情: www.ablybio.cn