

DIAPH1 Rabbit mAb

货号: **AYM29904**

产品信息

反应	Human,Mouse,Rat
宿主	Rabbit
克隆性	Monoclonal
预测反应	
应用	WB IHC IF/ICC
推荐浓度	WB: 1:500 - 1:2000 IHC: 1:50 - 1:200 IF/ICC: 1:50 - 1:200
理论分子量	138kDa/140kDa/141kDa
实测分子量	155kDa
形式	Liquid
保存条件	Store at -20°C. Avoid freeze / thaw cycles. Buffer: PBS with 0.75% BSA,50% glycerol,pH7.3.
偶联物	Unconjugated
阳性对照	293T
细胞定位	Cell membrane,Cell projection,Cytoplasm,cytoskeleton,ruffle membrane
纯化	Affinity purification

抗原信息

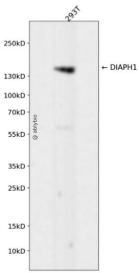
抗原信息	Recombinant fusion protein corresponding to Human DIAPH1.
序列	TEEKMRRAKLAKEKAEKERLEKQKREQLIDMNAEGDETGVMSLLEALQSGAAFRRKRGPQRQANRKAGCAVTSLLASELTKDDAMAAVPAKVKNSSETFPTILEEAKELVGRAS

靶点信息

研究背景	This gene is a homolog of the Drosophila diaphanous gene, and has been linked to autosomal dominant, fully penetrant, nonsyndromic sensorineural progressive low-frequency hearing loss. Actin polymerization involves proteins known to interact with diaphanous protein in Drosophila and mouse. It has therefore been speculated that this gene may have a role in the regulation of actin polymerization in hair cells of the inner ear. Alternatively spliced transcript variants encoding distinct isoforms have been found for this gene.
------	--

基因ID	1729
基因名	DIAPH1
Swiss	O60610
别名	DIAPH1;DFNA1;DIA1;DRF1;LFHL1;SCBMS;hDIA1

产品验证



Western blot analysis of DIAPH1 expressed in 293T using DIAPH1 Rabbit mAb at 1:1000. Secondary antibody: HRP Goat Anti-Rabbit IgG (H+L) at 1:5000. Lysates/proteins: 30ug per lane. Blocking buffer: 5% non-fat dry milk in TBST. Detection: ECL Enhanced Kit. Exposure time: 120s.

实验步骤

访问官网浏览详情: www.ablybio.cn