

CTP synthase / CTPS Rabbit mAb

货号: **AYM29902**

产品信息

反应	Human,Mouse
宿主	Rabbit
克隆性	Monoclonal
预测反应	
应用	WB FC
推荐浓度	WB: 1:500 - 1:2000 FC: 1:20 - 1:50
理论分子量	41kDa/66kDa
实测分子量	72kDa
形式	Liquid
保存条件	Store at -20°C. Avoid freeze / thaw cycles. Buffer: PBS with 0.75% BSA,50% glycerol,pH7.3.
偶联物	Unconjugated
阳性对照	Raji,HeLa,22Rv1,Jurkat,Mouse brain
细胞定位	cytoplasm,cytosol
纯化	Affinity purification

抗原信息

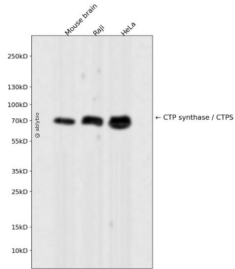
抗原信息	Recombinant fusion protein corresponding to Human CTP synthase / CTPS.
序列	MQLAVVEFSRNVLGWQDANSTEFDPPTSHPVVVDMP EHNPGQMGGTMRLGKRRTLFQTKNSV MRKLYGDADYLEERH RHRFEVNPVWKKCLEEQGLKFGVDVEGERMEIVELEDHPFFVGVQYHPEFLSRPIKSPPPYFGLLLASVGR LSHYLQKGC RLSPRDTYSDRSGSSSPDSEITELKFPSINH D

靶点信息

研究背景	This gene encodes an enzyme responsible for the catalytic conversion of UTP (uridine triphosphate) to CTP (cytidine triphosphate). This reaction is an important step in the biosynthesis of phospholipids and nucleic acids. Activity of this protein is important in the immune system, and loss of function of this gene has been associated with immunodeficiency. Alternative splicing results in multiple transcript variants.
基因ID	1503

基因名	CTPS1
Swiss	P17812
别名	CTPS1;CTPS;GATD5;IMD24

产品验证



Western blot analysis of CTP synthase / CTPS expressed in Mouse brain, Raji, HeLa using CTP synthase / CTPS Rabbit mAb at 1:1000. Secondary antibody: HRP Goat Anti-Rabbit IgG (H+L) at 1:5000. Lysates/proteins: 30ug per lane. Blocking buffer: 5% non-fat dry milk in TBST. Detection: ECL Enhanced Kit. Exposure time: 120s.

实验步骤

访问官网浏览详情: www.ablybio.cn