

Involucrin Rabbit mAb

货号: **AYM29893**

产品信息

反应	Human,Rat
宿主	Rabbit
克隆性	Monoclonal
预测反应	
应用	WB IHC FC
推荐浓度	WB: 1:500 - 1:2000 IHC: 1:50 - 1:200 FC: 1:20 - 1:50
理论分子量	120kDa
实测分子量	120kDa
形式	Liquid
保存条件	Store at -20°C. Avoid freeze / thaw cycles. Buffer: PBS with 0.75% BSA,50% glycerol,pH7.3.
偶联物	Unconjugated
阳性对照	Rat lung
细胞定位	centrosome,cytoplasm,cytosol,extracellular exosome,nuclear body
纯化	Affinity purification

抗原信息

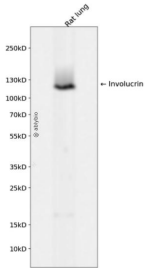
抗原信息	Recombinant fusion protein corresponding to Human Involucrin.
序列	KAENPEQQLKQEKTRDQQLNKQLEEEKLLDQQLDQELVQRDEQLGMKKEQLLELPEQQEGHLKHLEQQEGQLKHPEQQEGQLELPEQQEGQLELPEQQE

靶点信息

研究背景	Involucrin, a component of the keratinocyte crosslinked envelope, is found in the cytoplasm and crosslinked to membrane proteins by transglutaminase. This gene is mapped to 1q21, among calpactin I light chain, trichohyalin, profilaggrin, loricrin, and calyculin. [provided by RefSeq, Jul 2008]
基因ID	3713

基因名	IVL
Swiss	P07476
别名	

产品验证



Western blot analysis of Involucrin expressed in Rat lung using Involucrin Rabbit mAb at 1:1000. Secondary antibody: HRP Goat Anti-Rabbit IgG (H+L) at 1:5000. Lysates/proteins: 30ug per lane. Blocking buffer: 5 % non-fat dry milk in TBST. Detection: ECL Enhanced Kit. Exposure time: 120s.

实验步骤

访问官网浏览详情: www.ablybio.cn