

# CPEB1 Rabbit mAb

货号: **AYM29888**

## 产品信息

反应	Human
宿主	Rabbit
克隆性	Monoclonal
预测反应	
应用	WB IP
推荐浓度	<b>WB:</b> 1:500 - 1:2000 <b>IP:</b> 1:20 - 1:50
理论分子量	53kDa/54kDa/62kDa
实测分子量	70kDa
形式	Liquid
保存条件	Store at -20°C. Avoid freeze / thaw cycles. Buffer: PBS with 0.75% BSA, 50% glycerol, pH7.3.
偶联物	Unconjugated
阳性对照	SH-SY5Y, K-562, Mouse brain, Rat liver
细胞定位	Cell junction, Cell projection, Cytoplasm, Cytoplasmic granule, Membrane, P-body, dendrite, postsynaptic cell membrane, postsynaptic density, synapse
纯化	Affinity purification

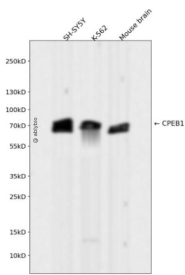
## 抗原信息

抗原信息	Recombinant fusion protein corresponding to Human CPEB1.
序列	HRQAAAVNEATCTWSGQLPPRNYKNPIYSCKVFLGGVPWDITEAGLVNTRFRVFGSLSVEWPGKDGKHPRCPPKGYVYLV FELEKSVRSLLQACSHDPLSPDGLSEYFKMSSRRMRCKEVQVIPWVLADSNFVRSPSQRLDPSRTVFGALHGMLNAEA LAAILNDFGGVYAGIDTDKHKYPIGSGRVTFNNQRSYLKAVSAAFVEIKTKFTKKVQIDPYLEDLSLCHICSSQGPFFCR DQVCFKYFCRSCWHWRHSMEGLRHHSPLMRNQKNRDSS

## 靶点信息

研究背景	This gene encodes a member of the cytoplasmic polyadenylation element binding protein family. This highly conserved protein binds to a specific RNA sequence, called the cytoplasmic polyadenylation element, found in the 3' untranslated region of some mRNAs. The encoded protein functions in both the cytoplasm and the nucleus. It is involved in the regulation of mRNA translation, as well as processing of the 3' untranslated region, and may play a role in cell proliferation and tumorigenesis. Alternative splicing results in multiple transcript variants.
基因ID	64506
基因名	CPEB1
Swiss	Q9BZB8
别名	CPEB1;CPE-BP1;CPEB;CPEB-1;h-CPEB;hCPEB-1

## 产品验证



Western blot analysis of CPEB1 expressed in SH-SY5Y, K-562, Mouse brain using CPEB1 Rabbit mAb at 1:1000. Secondary antibody: HRP Goat Anti-Rabbit IgG (H+L) at 1:5000. Lysates/proteins: 30ug per lane. Blocking buffer: 5% non-fat dry milk in TBST. Detection: ECL Enhanced Kit. Exposure time: 120s.

## 实验步骤

访问官网浏览详情: [www.ablybio.cn](http://www.ablybio.cn)