

Cytokeratin 20 Rabbit mAb

货号: **AYM29886**

产品信息

反应	Human,Rat
宿主	Rabbit
克隆性	Monoclonal
预测反应	
应用	WB IHC IF/ICC IP FC
推荐浓度	WB: 1:500 - 1:2000 IHC: 1:50 - 1:200 IF/ICC: 1:50 - 1:200 IP: 1:20 - 1:50 FC: 1:20 - 1:50
理论分子量	48kDa
实测分子量	44kDa
形式	Liquid
保存条件	Store at -20°C. Avoid freeze / thaw cycles. Buffer: PBS with 0.75% BSA,50% glycerol,pH7.3.
偶联物	Unconjugated
阳性对照	HeLa,Mouse intestine
细胞定位	Cytoplasm
纯化	Affinity purification

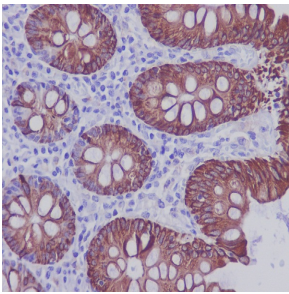
抗原信息

抗原信息	Recombinant fusion protein corresponding to Human Cytokeratin 20.
序列	KYEVMAQKNLQEAKEQFERQTAVLQQQVTVNTEELKGTEVQLTELRRTSQSLEIELQSHLSMKESLEHTLEETKARYSSQL ANLQSLSSLEAQLMQIRSNMERQNNEYHILLDIKTRLEQEIATYRRLLLEGEDVKTTEYQLSTLEERDIKTRKIKTVVQEVD GKVVSEVKEVEENI

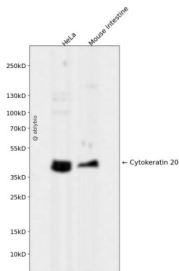
靶点信息

研究背景	The protein encoded by this gene is a member of the keratin family. The keratins are intermediate filament proteins responsible for the structural integrity of epithelial cells and are subdivided into cytokeratins and hair keratins. The type I cytokeratins consist of acidic proteins which are arranged in pairs of heterotypic keratin chains. This cytokeratin is a major cellular protein of mature enterocytes and goblet cells and is specifically expressed in the gastric and intestinal mucosa. The type I cytokeratin genes are clustered in a region of chromosome 17q12-q21.
基因ID	54474
基因名	KRT20
Swiss	P35900
别名	CD20;CK-20;CK20;K20;KRT21;KRT20;Cytokeratin 20

产品验证



Immunohistochemical analysis of paraffin-embedded human colon, using Cytokeratin 20 Antibody.



Western blot analysis of Cytokeratin 20 expressed in HeLa, Mouse intestine using Cytokeratin 20 Rabbit mAb at 1:1000. Secondary antibody: HRP Goat Anti-Rabbit IgG (H+L) at 1:5000. Lysates/proteins: 30ug per lane. Blocking buffer: 5% non-fat dry milk in TBST. Detection: ECL Enhanced Kit. Exposure time: 120s.

实验步骤

访问官网浏览详情: www.ablybio.cn