

ErbB 2 Rabbit mAb

货号: **AYM29885**

产品信息

反应	Human
宿主	Rabbit
克隆性	Monoclonal
预测反应	
应用	WB IHC IF/ICC IP FC
推荐浓度	WB: 1:500 - 1:2000 IHC: 1:50 - 1:200 IF/ICC: 1:50 - 1:200 IP: 1:20 - 1:50 FC: 1:20 - 1:50
理论分子量	62kDa/70kDa/97kDa/134kDa/136kDa/137kDa
实测分子量	185kDa
形式	Liquid
保存条件	Store at -20°C. Avoid freeze / thaw cycles. Buffer: PBS with 0.75% BSA,50% glycerol,pH7.3.
偶联物	Unconjugated
阳性对照	SK-BR-3,Mouse lung
细胞定位	Cell membrane,Cytoplasm,Nucleus,Nucleus,Single-pass type I membrane protein,perinuclear region
纯化	Affinity purification

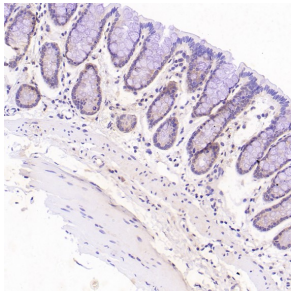
抗原信息

抗原信息	Recombinant fusion protein corresponding to Human ErbB 2.
序列	ARPAGATLERPKTLSPGKNGVVKDVFAGGAVENPEYLTPQGGAAPQHPPPAFSPAFDNLYYWDQDPPERGAPPSTFK GTPTAENPEYLGLDVPV

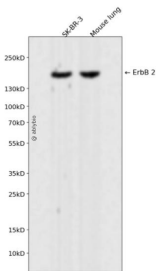
靶点信息

研究背景	This gene encodes a member of the epidermal growth factor (EGF) receptor family of receptor tyrosine kinases. This protein has no ligand binding domain of its own and therefore cannot bind growth factors. However, it does bind tightly to other ligand-bound EGF receptor family members to form a heterodimer, stabilizing ligand binding and enhancing kinase-mediated activation of downstream signalling pathways, such as those involving mitogen-activated protein kinase and phosphatidylinositol-3 kinase. Allelic variations at amino acid positions 654 and 655 of isoform a (positions 624 and 625 of isoform b) have been reported, with the most common allele, Ile654/Ile655, shown here. Amplification and/or overexpression of this gene has been reported in numerous cancers, including breast and ovarian tumors. Alternative splicing results in several additional transcript variants, some encoding different isoforms and others that have not been fully characterized.
基因ID	2064
基因名	ERBB2
Swiss	P04626
别名	ERBB2;CD340;HER-2;HER-2/neu;HER2;MLN 19;NEU;NGL;TKR1;erb-b2 receptor tyrosine kinase 2;HER2/ErbB2;ErbB2;MLN19

产品验证



Immunohistochemical analysis of paraffin-embedded Rat stomach, using the Antibody at 1:50 dilution.



Western blot analysis of ErbB 2 expressed in SK-BR-3, Mouse lung using ErbB 2 Rabbit mAb at 1:1000. Secondary antibody: HRP Goat Anti-Rabbit IgG (H+L) at 1:5000. Lysates/proteins: 30ug per lane. Blocking buffer: 5% non-fat dry milk in TBST. Detection: ECL Enhanced Kit. Exposure time: 120s.

实验步骤

访问官网浏览详情: www.ablybio.cn