

Glucose 6 phosphate isomerase Rabbit mAb

货号: **AYM29863**

产品信息

反应	Human
宿主	Rabbit
克隆性	Monoclonal
预测反应	
应用	WB IHC IF/ICC FC
推荐浓度	WB: 1:500 - 1:2000 IHC: 1:50 - 1:200 IF/ICC: 1:50 - 1:200 FC: 1:20 - 1:50
理论分子量	63kDa/64kDa
实测分子量	63kDa
形式	Liquid
保存条件	Store at -20°C. Avoid freeze / thaw cycles. Buffer: PBS with 0.75% BSA,50% glycerol,pH7.3.
偶联物	Unconjugated
阳性对照	HL-60,BT-474,MCF7,HeLa,Mouse kidney,Mouse heart,Mouse brain,Rat brain,Rat heart
细胞定位	Cytoplasm,Secreted
纯化	Affinity purification

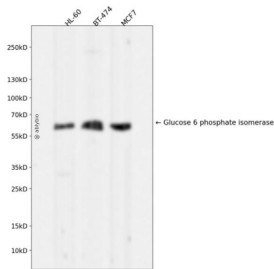
抗原信息

抗原信息	Recombinant fusion protein corresponding to Human Glucose 6 phosphate isomerase.
序列	MAALTRDPQFQKLQQWYREHRSELNLRRLFDANKDRFNHFSLTLNTNHGHILVDYSKNLVTEDVMRMLVDLAKSRGVEA ARERMFNGEKINYTEGRAVLHVALRNRNTPILVDGKDVMPVKNKVLDKMKSFCQVRVSGDWKGYTGKTITDVINIGGG SDLGPLMVTEALKPYSSGGPRVWYVSNIDGTHIAKTLAQLNPESLFIASKTFTTQETITNAETAKEWFLQAAKDPSAVAK HFVALSTNTTKVKEFGIDPQNMFEFWDWVGGRYSLWSAI

靶点信息

研究背景	This gene encodes a member of the glucose phosphate isomerase protein family. The encoded protein has been identified as a moonlighting protein based on its ability to perform mechanistically distinct functions. In the cytoplasm, the gene product functions as a glycolytic enzyme (glucose-6-phosphate isomerase) that interconverts glucose-6-phosphate and fructose-6-phosphate. Extracellularly, the encoded protein (also referred to as neuroleukin) functions as a neurotrophic factor that promotes survival of skeletal motor neurons and sensory neurons, and as a lymphokine that induces immunoglobulin secretion. The encoded protein is also referred to as autocrine motility factor based on an additional function as a tumor-secreted cytokine and angiogenic factor. Defects in this gene are the cause of nonspherocytic hemolytic anemia and a severe enzyme deficiency can be associated with hydrops fetalis, immediate neonatal death and neurological impairment. Alternative splicing results in multiple transcript variants.
基因ID	2821
基因名	GPI
Swiss	P06744
别名	GPI;AMF;GNPI;NLK;PGI;PHI;SA-36;SA36

产品验证



Western blot analysis of Glucose 6 phosphate isomerase expressed in HL-60, BT-474, MCF7 using Glucose 6 phosphate isomerase Rabbit mAb at 1:1000. Secondary antibody: HRP Goat Anti-Rabbit IgG (H+L) at 1:5000. Lysates/proteins: 30ug per lane. Blocking buffer: 5% non-fat dry milk in TBST. Detection: ECL Enhanced Kit. Exposure time: 120s.

实验步骤

访问官网浏览详情: www.ablybio.cn