

# Rho Rabbit mAb

货号: **AYM29848**

## 产品信息

反应	Human,Mouse,Rat
宿主	Rabbit
克隆性	Monoclonal
预测反应	
应用	WB IHC IF/ICC
推荐浓度	<b>WB:</b> 1:500 - 1:2000 <b>IHC:</b> 1:50 - 1:200 <b>IF/ICC:</b> 1:50 - 1:200
理论分子量	21kDa
实测分子量	22kDa
形式	Liquid
保存条件	Store at -20°C. Avoid freeze / thaw cycles. Buffer: PBS with 0.75% BSA,50% glycerol,pH7.3.
偶联物	Unconjugated
阳性对照	HeLa
细胞定位	Cell membrane,Cell projection,Cleavage furrow,Cytoplasm,Cytoplasmic side,Lipid-anchor,Midbody,cell cortex,cytoskeleton,lamellipodium
纯化	Affinity purification

## 抗原信息

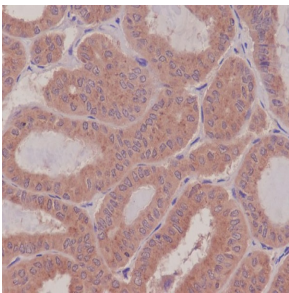
抗原信息	Recombinant fusion protein corresponding to Human Rho.
序列	MAAIRKKLVIVGDGACGKTCLLIVFSKDKQFPEVYVPTVFENYVADIEVDGKQVELALWDTAGQEDYDRLRPLSYPTDVL MCFSIDSPDLENIPKWTPEVKHFPCNPVPIILVGNKKDLRNDHTRRELAKMKQEPVKPEEGRDMANRIGAFGYMECSAK TKDGVREVFEMATRAALQARRGKKKSGCLVL

## 靶点信息

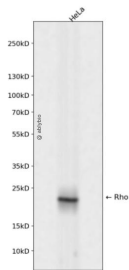
研究背景	This gene encodes a member of the Rho family of small GTPases, which cycle between inactive GDP-bound and active GTP-bound states and function as molecular switches in signal transduction cascades. Rho proteins promote reorganization of the actin cytoskeleton and regulate cell shape, attachment, and motility. Overexpression of this gene is associated with tumor cell proliferation and metastasis. Multiple alternatively spliced variants have been identified.
------	--

基因ID	387
基因名	RHOA
Swiss	P61586
别名	ARH12;ARHA;RHO12;RHOH12;Rho;RHOA;RhoA

## 产品验证



Immunohistochemical analysis of paraffin-embedded human thyroid cancer, using Rho Antibody.



Western blot analysis of Rho expressed in HeLa using Rho Rabbit mAb at 1:1000. Secondary antibody: HRP Goat Anti-Rabbit IgG (H+L) at 1:5000. Lysates/proteins: 30ug per lane. Blocking buffer: 5% non-fat dry milk in TBST. Detection: ECL Enhanced Kit. Exposure time: 120s.

## 实验步骤

访问官网浏览详情: [www.ablybio.cn](http://www.ablybio.cn)