

# Eg5 Rabbit mAb

货号: **AYM29844**

## 产品信息

反应	Human
宿主	Rabbit
克隆性	Monoclonal
预测反应	
应用	WB IF/ICC IP
推荐浓度	<b>WB:</b> 1:500 - 1:2000 <b>IF/ICC:</b> 1:50 - 1:200 <b>IP:</b> 1:20 - 1:50
理论分子量	119kDa
实测分子量	119kDa
形式	Liquid
保存条件	Store at -20°C. Avoid freeze / thaw cycles. Buffer: PBS with 0.75% BSA,50% glycerol,pH7.3.
偶联物	Unconjugated
阳性对照	HeLa,Jurkat,SW620
细胞定位	Cytoplasm,cytoskeleton,spindle pole
纯化	Affinity purification

## 抗原信息

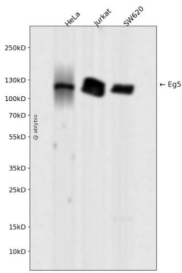
抗原信息	Recombinant fusion protein corresponding to Human Eg5.
序列	SVKHSDKLNNGNLEKISQETEQRCESLNTRTVYFSEQWVSSLNEREQELHNLLEVVSQCCEASSSDITEKSDGRKAAHEKQ HNIFLDQMTIDEDKLIQAQNLNETIKIGLTKLNCFLQDLKLDIPTGTTTPQRKSYLYPSTLVRTEPREHLLDQLKRKQPELLM MLNCSENNKEETIPDVDVVEEAVLGQYTEEPLSQEPSVDAGVDCSSIGGVPPFFQHKKSHGKDKENRGINTLERSKVEETTEH LVTKSRLPLRAQINL

## 靶点信息

研究背景	This gene encodes a motor protein that belongs to the kinesin-like protein family. Members of this protein family are known to be involved in various kinds of spindle dynamics. The function of this gene product includes chromosome positioning, centrosome separation and establishing a bipolar spindle during cell mitosis.
------	---

基因ID	3832
基因名	KIF11
Swiss	P52732
别名	KIF11;EG5;HKSP;KNSL1;MCLMR;TRIP5

## 产品验证



Western blot analysis of Eg5 expressed in HeLa, Jurkat, SW620 using Eg5 Rabbit mAb at 1:1000. Second ary antibody: HRP Goat Anti-Rabbit IgG (H+L) at 1:5000. Lysates/proteins: 30ug per lane. Blocking buff er: 5% non-fat dry milk in TBST. Detection: ECL Enhanced Kit. Exposure time: 120s.

## 实验步骤

访问官网浏览详情: [www.ablybio.cn](http://www.ablybio.cn)