

Cyclin A2 Rabbit mAb

货号: **AYM29841**

产品信息

反应	Human,Mouse,Rat
宿主	Rabbit
克隆性	Monoclonal
预测反应	
应用	WB IHC IF/ICC
推荐浓度	WB: 1:500 - 1:2000 IHC: 1:50 - 1:200 IF/ICC: 1:50 - 1:200
理论分子量	50kDa
实测分子量	50kDa
形式	Liquid
保存条件	Store at -20°C. Avoid freeze / thaw cycles. Buffer: PBS with 0.75% BSA,50% glycerol,pH7.3.
偶联物	Unconjugated
阳性对照	HeLa,HCT116,Jurkat,Mouse testis
细胞定位	Cytoplasm,Nucleus
纯化	Affinity purification

抗原信息

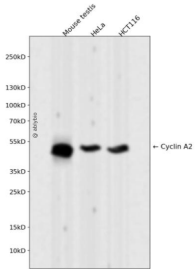
抗原信息	Recombinant fusion protein corresponding to Human Cyclin A2.
序列	TREAGSALLALQQTALQEDQENINPEKAAPVQQPRTRAALAVLKSGNPRGLAQQQRPKTRRVAPLKDLPVNDEHVTVPPW KANSKQPAFTIHVDEAEKEAQKPAESQKIEREDALAFNSAISLPGPRKPLVPLDYPMDFGSPHTMDMSIILEDEKPVSV NEVPDYHEDIHTYLREMEVKCKPKVGYMKKQPDITNSM

靶点信息

研究背景	The protein encoded by this gene belongs to the highly conserved cyclin family, whose members function as regulators of the cell cycle. This protein binds and activates cyclin-dependent kinase 2 and thus promotes transition through G1/S and G2/M. [provided by RefSeq, Aug 2016]
基因ID	890

基因名	CCNA2
Swiss	P20248
别名	CCN1;CCNA;Cyclin A2;CCNA2;cyclin-A2

产品验证



Western blot analysis of Cyclin A2 expressed in Mouse testis, HeLa, HCT116 using Cyclin A2 Rabbit mAb at 1:1000. Secondary antibody: HRP Goat Anti-Rabbit IgG (H+L) at 1:5000. Lysates/proteins: 30ug per lane. Blocking buffer: 5% non-fat dry milk in TBST. Detection: ECL Enhanced Kit. Exposure time: 120s.

实验步骤

访问官网浏览详情: www.ablybio.cn