

BNIP3 Rabbit mAb

货号: **AYM29835**

产品信息

反应	Human,Mouse,Rat
宿主	Rabbit
克隆性	Monoclonal
预测反应	
应用	WB IHC IF/ICC
推荐浓度	WB: 1:500 - 1:2000 IHC: 1:50 - 1:200 IF/ICC: 1:50 - 1:200
理论分子量	27kDa
实测分子量	30kDa
形式	Liquid
保存条件	Store at -20°C. Avoid freeze / thaw cycles. Buffer: PBS with 0.75% BSA,50% glycerol,pH7.3.
偶联物	Unconjugated
阳性对照	HeLa,NIH/3T3,Rat heart
细胞定位	Mitochondrion,Mitochondrion outer membrane,Single-pass membrane protein
纯化	Affinity purification

抗原信息

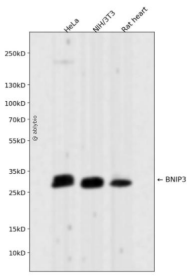
抗原信息	Recombinant fusion protein corresponding to Human BNIP3.
------	--

靶点信息

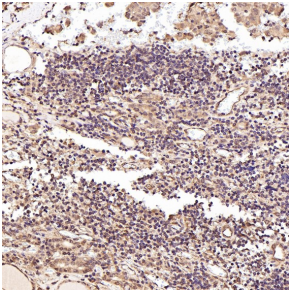
研究背景	This gene encodes a mitochondrial protein that contains a BH3 domain and acts as a pro-apoptotic factor. The encoded protein interacts with anti-apoptotic proteins, including the E1B 19 kDa protein and Bcl2. This gene is silenced in tumors by DNA methylation.
基因ID	664
基因名	BNIP3
Swiss	Q12983

别名	BNIP3
----	-------

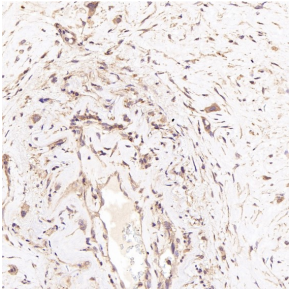
产品验证



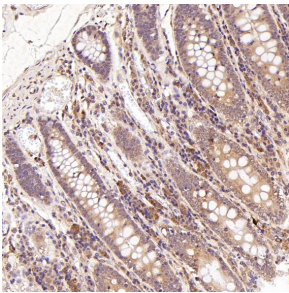
Western blot analysis of BNIP3 expressed in HeLa,NIH/3T3,Rat heart using BNIP3 Rabbit mAb at 1:1000. Secondary antibody: HRP Goat Anti-Rabbit IgG (H+L) at 1:5000. Lysates/proteins: 30ug per lane. Blocking buffer: 5% non-fat dry milk in TBST. Detection: ECL Enhanced Kit. Exposure time: 120s.



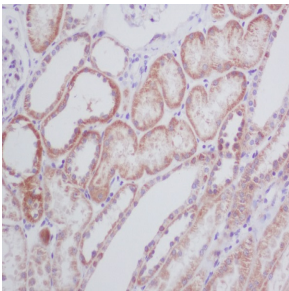
Immunohistochemical analysis of paraffin-embedded Human thyroid cancer, using the Antibody at 1:100 dilution.



Immunohistochemical analysis of paraffin-embedded Human pancreatic cancer, using the Antibody at 1:100 dilution.



Immunohistochemical analysis of paraffin-embedded Human placenta, using the Antibody at 1:100 dilution.



Immunohistochemical analysis of paraffin-embedded human kidney, using BNIP3 Antibody.

实验步骤

访问官网浏览详情: www.ablybio.cn