

Epsin 1 Rabbit mAb

货号: **AYM29825**

产品信息

反应	Human,Mouse,Rat
宿主	Rabbit
克隆性	Monoclonal
预测反应	
应用	WB ICC
推荐浓度	WB: 1:500 - 1:2000 ICC: 1:50 - 1:200
理论分子量	
实测分子量	90kDa
形式	Liquid
保存条件	Store at -20°C. Avoid freeze / thaw cycles. Buffer: PBS with 0.75% BSA,50% glycerol,pH7.3.
偶联物	Unconjugated
阳性对照	U-87MG,Mouse lung,Mouse liver,Mouse kidney,Rat testis,Rat brain
细胞定位	clathrin-coated pit,cytosol,endosome,nucleus,plasma membrane
纯化	Affinity purification

抗原信息

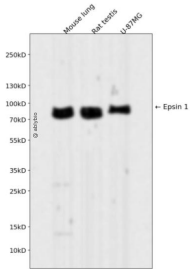
抗原信息	Recombinant fusion protein corresponding to Human Epsin 1.
序列	LVALLRDEDRLREERAHALKTKEKLAQTATASSAAVGSPPPEAEQAWPQS

靶点信息

研究背景	This gene encodes a member of the epsin protein family. The encoded protein binds clathrin and is involved in the endocytosis of clathrin-coated vesicles. Loss of function of this gene is associated with reduced tumor growth and progression in certain cancer types. [provided by RefSeq, Mar 2016]
基因ID	29924
基因名	EPN1

Swiss	Q9Y6I3
别名	EPN1

产品验证



Western blot analysis of Epsin 1 expressed in Mouse lung,Rat testis,U-87MG using Epsin 1 Rabbit mAb at 1:1000. Secondary antibody: HRP Goat Anti-Rabbit IgG (H+L) at 1:5000. Lysates/proteins: 30ug per lane. Blocking buffer: 5% non-fat dry milk in TBST. Detection: ECL Enhanced Kit. Exposure time: 120s.

实验步骤

访问官网浏览详情: www.ablybio.cn