

# HLTF Rabbit mAb

货号: **AYM29822**

## 产品信息

|       |   |
|-------|---|
| 反应    | Human,Rat   |
| 宿主    | Rabbit  |
| 克隆性   | Monoclonal  |
| 预测反应  |   |
| 应用    | WB IHC IF/ICC   |
| 推荐浓度  | <b>WB:</b> 1:500 - 1:2000<br><b>IHC:</b> 1:50 - 1:200<br><b>IF/ICC:</b> 1:50 - 1:200          |
| 理论分子量 | 120kDa  |
| 实测分子量 | 120kDa  |
| 形式    | Liquid  |
| 保存条件  | Store at -20°C. Avoid freeze / thaw cycles.<br>Buffer: PBS with 0.75% BSA,50% glycerol,pH7.3. |
| 偶联物   | Unconjugated  |
| 阳性对照  | HeLa,293T,HepG2,Mouse lung,Mouse heart,Rat lung   |
| 细胞定位  | Cytoplasm,Nucleus,nucleolus,nucleoplasm   |
| 纯化    | Affinity purification   |

## 抗原信息

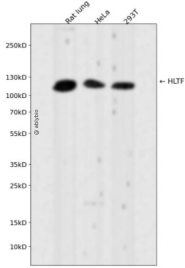
|      |   |
|------|---|
| 抗原信息 | Recombinant fusion protein corresponding to Human HLTF.   |
| 序列   | TEAGSPTIMLLSLKAGGVGLNLSAASRVFLMDPAWNPAEDQCFDRCHRLGQKQEVIITKFIVKDSVEENMLKIQNKREL<br>AAGAFGTTKPNADMKQAKINEIRTLIDL |

## 靶点信息

|      |  |
|------|--|
| 研究背景 | This gene encodes a member of the SWI/SNF family. Members of this family have helicase and ATPase activities and are thought to regulate transcription of certain genes by altering the chromatin structure around those genes. The encoded protein contains a RING finger DNA binding motif. Two transcript variants encoding the same protein have been found for this gene. However, use of an alternative translation start site produces an isoform that is truncated at the N-terminus compared to the full-length protein. [provided by RefSeq, Jul 2008] |
|------|--|

|       |  |
|-------|--|
| 基因ID  | 6596   |
| 基因名   | HLTF   |
| Swiss | Q14527   |
| 别名    | HIP116; HIP116A; HLTF1; RNF80; SMARCA3; SNF2L3; ZBU1 |

## 产品验证



Western blot analysis of HLTF expressed in Rat lung, HeLa, 293T using HLTF Rabbit mAb at 1:1000. Secondary antibody: HRP Goat Anti-Rabbit IgG (H+L) at 1:5000. Lysates/proteins: 30ug per lane. Blocking buffer: 5% non-fat dry milk in TBST. Detection: ECL Enhanced Kit. Exposure time: 120s.

## 实验步骤

访问官网浏览详情: [www.ablybio.cn](http://www.ablybio.cn)