

IGHD Rabbit mAb

货号: **AYM29817**

产品信息

反应	Human
宿主	Rabbit
克隆性	Monoclonal
预测反应	
应用	WB IHC
推荐浓度	WB: 1:500 - 1:2000 IHC: 1:50 - 1:200
理论分子量	84kDa
实测分子量	84kDa
形式	Liquid
保存条件	Store at -20°C. Avoid freeze / thaw cycles. Buffer: PBS with 0.75% BSA, 50% glycerol, pH7.3.
偶联物	Unconjugated
阳性对照	Human plasma
细胞定位	blood microparticle, external side of plasma membrane, extracellular exosome, extracellular space, immunoglobulin complex, circulating, plasma membrane
纯化	Affinity purification

抗原信息

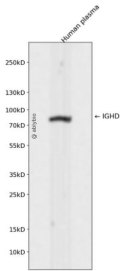
抗原信息	Recombinant fusion protein corresponding to Human IGHD.
序列	APTKAPDVFPIISGCRHPKDNSPVVLA CLITGYHPTSVTVTWYMGTSQPQRTPFEIQR RDSYYMTSSQLSTPLQWRQG EYKCVVQHTASKSKKEIFRW

靶点信息

研究背景	Constant region of immunoglobulin heavy chains. Immunoglobulins, also known as antibodies, are membrane-bound or secreted glycoproteins produced by B lymphocytes. In the recognition phase of humoral immunity, the membrane-bound immunoglobulins serve as receptors which, upon binding of a specific antigen, trigger the clonal expansion and differentiation of B lymphocytes into immunoglobulin-secreting plasma cells. Secreted immunoglobulins mediate the effector phase of humoral immunity, which results in the elimination of bound antigens.
------	--

基因ID	3495
基因名	
Swiss	P01880
别名	

产品验证



Western blot analysis of IGHD expressed in Human plasma using IGHD Rabbit mAb at 1:1000. Secondary antibody: HRP Goat Anti-Rabbit IgG (H+L) at 1:5000. Lysates/proteins: 30ug per lane. Blocking buffer: 5% non-fat dry milk in TBST. Detection: ECL Enhanced Kit. Exposure time: 120s.

实验步骤

访问官网浏览详情: www.ablybio.cn