

ENTPD5 Rabbit mAb

货号: **AYM29793**

产品信息

反应	Human,Mouse,Rat
宿主	Rabbit
克隆性	Monoclonal
预测反应	
应用	WB IHC IP
推荐浓度	WB: 1:500 - 1:2000 IHC: 1:50 - 1:200 IP: 1:20 - 1:50
理论分子量	47kDa
实测分子量	47kDa
形式	Liquid
保存条件	Store at -20°C. Avoid freeze / thaw cycles. Buffer: PBS with 0.75% BSA,50% glycerol,pH7.3.
偶联物	Unconjugated
阳性对照	Mouse liver,Rat liver,Rat kidney
细胞定位	endoplasmic reticulum,extracellular region,extracellular space
纯化	Affinity purification

抗原信息

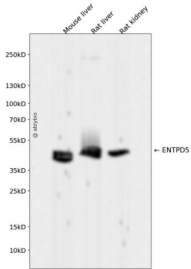
抗原信息	Recombinant fusion protein corresponding to Human ENTPD5.
序列	FEPCYAEVLRVVRGKLVHQPVEVQRGSGFYAFSYYYDRAVDTDIMIDYEKGGILKVEDFERKAREVCDNLENFTSGSPFLCMDL SYITALLKDGFGFADSTVLQ

靶点信息

研究背景	The protein encoded by this gene is similar to E-type nucleotidases (NTPases)/ecto-ATPase/apyrases. NTPases, such as CD39, mediate catabolism of extracellular nucleotides. ENTPD5 contains 4 apyrase-conserved regions which is characteristic of NTPases. [provided by RefSeq, Jan 2009]
基因ID	957

基因名	ENTPD5
Swiss	O75356
别名	CD39L4; NTPDase-5; PCPH

产品验证



Western blot analysis of ENTPD5 expressed in Mouse liver, Rat liver, Rat kidney using ENTPD5 Rabbit m Ab at 1:1000. Secondary antibody: HRP Goat Anti-Rabbit IgG (H+L) at 1:5000. Lysates/proteins: 30ug per lane. Blocking buffer: 5% non-fat dry milk in TBST. Detection: ECL Enhanced Kit. Exposure time: 12 0s.

实验步骤

访问官网浏览详情: www.ablybio.cn