

Phospho-GluR1 (S845) Rabbit mAb

货号: **AYM29785**

产品信息

反应	Human,Mouse,Rat
宿主	Rabbit
克隆性	Monoclonal
预测反应	
应用	WB
推荐浓度	WB: 1:500 - 1:2000
理论分子量	92kDa/93kDa/101kDa/102kDa
实测分子量	102kDa
形式	Liquid
保存条件	Store at -20°C. Avoid freeze / thaw cycles. Buffer: PBS with 0.75% BSA,50% glycerol,pH7.3.
偶联物	Unconjugated
阳性对照	Rat brain
细胞定位	Cell junction,Cell membrane,Cell projection,Endoplasmic reticulum membrane,Multi-pass membrane protein,dendrite,dendritic spine,postsynaptic cell membrane,postsynaptic density,synapse
纯化	Affinity purification

抗原信息

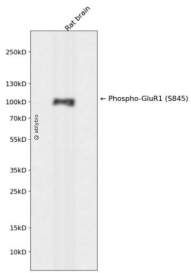
抗原信息	Recombinant fusion protein corresponding to Human Phospho-GluR1 (S845).
序列	

靶点信息

研究背景	Glutamate receptors are the predominant excitatory neurotransmitter receptors in the mammalian brain and are activated in a variety of normal neurophysiologic processes. These receptors are heteromeric protein complexes with multiple subunits, each possessing transmembrane regions, and all arranged to form a ligand-gated ion channel. The classification of glutamate receptors is based on their activation by different pharmacologic agonists. This gene belongs to a family of alpha-amino-3-hydroxy-5-methyl-4-isoxazole propionate (AMPA) receptors. Alternatively spliced transcript variants encoding different isoforms have been found for this gene.
------	---

基因ID	2890
基因名	GRIA1
Swiss	P42261
别名	GRIA1;GLUH1;GLUR1;GLURA;GluA1;HBGR1;GluR1

产品验证



Western blot analysis of Phospho-GluR1 (S845) expressed in Rat brain using Phospho-GluR1 (S845) Rabbit mAb at 1:1000. Secondary antibody: HRP Goat Anti-Rabbit IgG (H+L) at 1:5000. Lysates/proteins: 30ug per lane. Blocking buffer: 5% non-fat dry milk in TBST. Detection: ECL Enhanced Kit. Exposure time: 120s.

实验步骤

访问官网浏览详情: www.ablybio.cn