

Glycerol kinase Rabbit mAb

货号: **AYM29778**

产品信息

反应	Human,Mouse,Rat
宿主	Rabbit
克隆性	Monoclonal
预测反应	
应用	WB IP FC
推荐浓度	WB: 1:500 - 1:2000 IP: 1:20 - 1:50 FC: 1:20 - 1:50
理论分子量	57kDa/58kDa/60kDa/61kDa
实测分子量	50kDa
形式	Liquid
保存条件	Store at -20°C. Avoid freeze / thaw cycles. Buffer: PBS with 0.75% BSA,50% glycerol,pH7.3.
偶联物	Unconjugated
阳性对照	DU145,U-87MG
细胞定位	Cytoplasm,Cytoplasmic side,Mitochondrion outer membrane,Peripheral membrane protein
纯化	Affinity purification

抗原信息

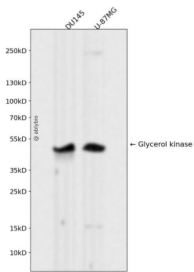
抗原信息	Recombinant fusion protein corresponding to Human Glycerol kinase.
序列	GIPLSHLQVDGGMTSNKILMQLQADILYIPVVKPSPMETTALGAAMAAGAAEGVGVWSLEPEDLSAVTMERFEPQINAEES EIRYSTWKKAVMKSMGWVTTQSPESGDPSIFCSLPLGFFIVSSMVMLIGARYISGIP

靶点信息

研究背景	The protein encoded by this gene belongs to the FGGY kinase family. This protein is a key enzyme in the regulation of glycerol uptake and metabolism. It catalyzes the phosphorylation of glycerol by ATP, yielding ADP and glycerol-3-phosphate. Mutations in this gene are associated with glycerol kinase deficiency (GKD). Alternatively spliced transcript variants encoding different isoforms have been found for this gene.
基因ID	2710

基因名	GK
Swiss	P32189
别名	GK;GK1;GKD

产品验证



Western blot analysis of Glycerol kinase expressed in DU145,U-87MG using Glycerol kinase Rabbit mAb at 1:1000. Secondary antibody: HRP Goat Anti-Rabbit IgG (H+L) at 1:5000. Lysates/proteins: 30ug per lane. Blocking buffer: 5% non-fat dry milk in TBST. Detection: ECL Enhanced Kit. Exposure time: 120 S.

实验步骤

访问官网浏览详情: www.ablybio.cn