

ABCE1 Rabbit mAb

货号: **AYM29774**

产品信息

反应	Human,Mouse,Rat
宿主	Rabbit
克隆性	Monoclonal
预测反应	
应用	WB IHC IF/ICC IP FC
推荐浓度	WB: 1:500 - 1:2000 IHC: 1:50 - 1:200 IF/ICC: 1:50 - 1:200 IP: 1:20 - 1:50 FC: 1:20 - 1:50
理论分子量	67kDa
实测分子量	67kDa
形式	Liquid
保存条件	Store at -20°C. Avoid freeze / thaw cycles. Buffer: PBS with 0.75% BSA,50% glycerol,pH7.3.
偶联物	Unconjugated
阳性对照	HeLa,HT-29,K-562,Mouse liver,Mouse spleen,Mouse pancreas
细胞定位	Cytoplasm,Mitochondrion
纯化	Affinity purification

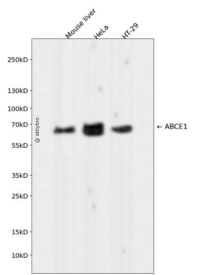
抗原信息

抗原信息	Recombinant fusion protein corresponding to Human ABCE1.
序列	AARVVKRFILHAKKTAFVVEHDFIMATYLADRVIVFDGVPKNTVANSPQTL LAGMNKFLSQLEITFRRDPNNYRPRINKLNS IKDVEQKKSGNYFFLDD

靶点信息

研究背景	The protein encoded by this gene is a member of the superfamily of ATP-binding cassette (ABC) transporters. ABC proteins transport various molecules across extra- and intra-cellular membranes. ABC genes are divided into seven distinct subfamilies (ABC1, MDR/TAP, MRP, ALD, OABP, GCN20, White). This protein is a member of the OABP subfamily. Alternatively referred to as the RNase L inhibitor, this protein functions to block the activity of ribonuclease L. Activation of ribonuclease L leads to inhibition of protein synthesis in the 2-5A/RNase L system, the central pathway for viral interferon action. Two transcript variants encoding the same protein have been found for this gene. [provided by RefSeq, Jul 2008]
基因ID	6059
基因名	ABCE1
Swiss	P61221
别名	ABC38; OABP; RLI; RLI1; RNASEL1; RNASELI; RNS4I

产品验证



Western blot analysis of ABCE1 expressed in Mouse liver, HeLa, HT-29 using ABCE1 Rabbit mAb at 1:1000. Secondary antibody: HRP Goat Anti-Rabbit IgG (H+L) at 1:5000. Lysates/proteins: 30ug per lane. Blocking buffer: 5% non-fat dry milk in TBST. Detection: ECL Enhanced Kit. Exposure time: 120s.

实验步骤

访问官网浏览详情: www.ablybio.cn