

Dopamine Receptor D3 Rabbit mAb

货号: **AYM29769**

产品信息

反应	Human,Mouse,Rat
宿主	Rabbit
克隆性	Monoclonal
预测反应	
应用	WB
推荐浓度	WB: 1:500 - 1:2000
理论分子量	44kDa
实测分子量	44kDa
形式	Liquid
保存条件	Store at -20°C. Avoid freeze / thaw cycles. Buffer: PBS with 0.75% BSA,50% glycerol,pH7.3.
偶联物	Unconjugated
阳性对照	HeLa,C6,SH-SY5Y,U-251MG,Mouse brain
细胞定位	Cell membrane,Multi-pass membrane protein
纯化	Affinity purification

抗原信息

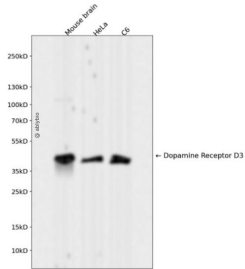
抗原信息	Recombinant fusion protein corresponding to Human Dopamine Receptor D3.
序列	MASLSQLSGHLNHYTCGAENSTGASQARPHAYYALSYCALILAIVFGNGLVCMVVKERALQTTTNYLVVSLAVADLLVATLV MPWVVYLEVTGGVWNFSR

靶点信息

研究背景	This gene encodes the D3 subtype of the five (D1-D5) dopamine receptors. The activity of the D3 subtype receptor is mediated by G proteins which inhibit adenylyl cyclase. This receptor is localized to the limbic areas of the brain, which are associated with cognitive, emotional, and endocrine functions. Genetic variation in this gene may be associated with susceptibility to hereditary essential tremor 1. Alternative splicing of this gene results in transcript variants encoding different isoforms, although some variants may be subject to nonsense-mediated decay (NMD). [provided by RefSeq, Jul 2008]
基因ID	1814

基因名	DRD3
Swiss	P35462
别名	D3DR; ETM1; FET1

产品验证



Western blot analysis of Dopamine Receptor D3 expressed in Mouse brain, HeLa, C6 using Dopamine Receptor D3 Rabbit mAb at 1:1000. Secondary antibody: HRP Goat Anti-Rabbit IgG (H+L) at 1:5000. Lysates/proteins: 30ug per lane. Blocking buffer: 5% non-fat dry milk in TBST. Detection: ECL Enhanced Kit. Exposure time: 120s.

实验步骤

访问官网浏览详情: www.ablybio.cn