

Bcl6 Rabbit mAb

货号: **AYM29751**

产品信息

反应	Human
宿主	Rabbit
克隆性	Monoclonal
预测反应	
应用	WB IHC IF/ICC IP
推荐浓度	WB: 1:500 - 1:2000 IHC: 1:50 - 1:200 IF/ICC: 1:50 - 1:200 IP: 1:20 - 1:50
理论分子量	72kDa/78kDa
实测分子量	78kDa
形式	Liquid
保存条件	Store at -20°C. Avoid freeze / thaw cycles. Buffer: PBS with 0.75% BSA,50% glycerol,pH7.3.
偶联物	Unconjugated
阳性对照	Raji
细胞定位	Nucleus
纯化	Affinity purification

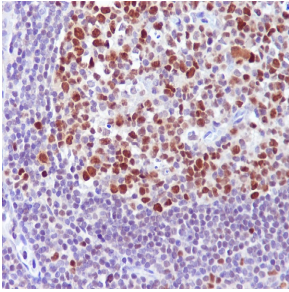
抗原信息

抗原信息	Recombinant fusion protein corresponding to Human Bcl6.
序列	SKNACILQASGSPPAKSPTDPKACNWKKYKFIVLNSLNQNAKPEGPEQAE LGRLSPRAYTAPPACQPPMEPENLDLQSPTKLSASGEDSTIPQASRLNNIV

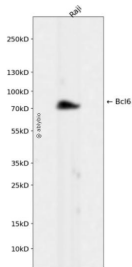
靶点信息

研究背景	The protein encoded by this gene is a zinc finger transcription factor and contains an N-terminal POZ domain. This protein acts as a sequence-specific repressor of transcription, and has been shown to modulate the transcription of STAT-dependent IL-4 responses of B cells. This protein can interact with a variety of POZ-containing proteins that function as transcription corepressors. This gene is found to be frequently translocated and hypermutated in diffuse large-cell lymphoma (DLCL), and may be involved in the pathogenesis of DLCL. Alternatively spliced transcript variants encoding different protein isoforms have been found for this gene.
基因ID	604
基因名	BCL6
Swiss	P41182
别名	BCL6;BCL5;BCL6A;LAZ3;ZBTB27;ZNF51

产品验证



Immunohistochemical analysis of paraffin-embedded human tonsil, using Bcl-6 Antibody.



Western blot analysis of Bcl6 expressed in Raji using Bcl6 Rabbit mAb at 1:1000. Secondary antibody: HRP Goat Anti-Rabbit IgG (H+L) at 1:5000. Lysates/proteins: 30ug per lane. Blocking buffer: 5% non-fat dry milk in TBST. Detection: ECL Enhanced Kit. Exposure time: 120s.

实验步骤

访问官网浏览详情: www.ablybio.cn