

Cdk6 Rabbit mAb

货号: **AYM29750**

产品信息

反应	Human
宿主	Rabbit
克隆性	Monoclonal
预测反应	
应用	WB IHC IF/ICC FC
推荐浓度	WB: 1:500 - 1:2000 IHC: 1:50 - 1:200 IF/ICC: 1:50 - 1:200 FC: 1:20 - 1:50
理论分子量	36kDa
实测分子量	37kDa
形式	Liquid
保存条件	Store at -20°C. Avoid freeze / thaw cycles. Buffer: PBS with 0.75% BSA,50% glycerol,pH7.3.
偶联物	Unconjugated
阳性对照	HeLa
细胞定位	Cell projection,Cytoplasm,Nucleus,centrosome,cytoskeleton,microtubule organizing center,ruffle
纯化	Affinity purification

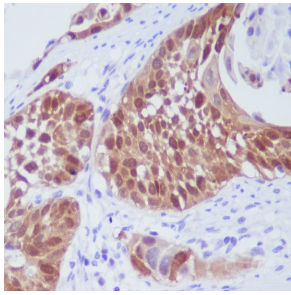
抗原信息

抗原信息	Recombinant fusion protein corresponding to Human Cdk6.
序列	MEKDGLCRADQQYECVAEIGEGAYGKVKARDLKNNGGRFVALKRVRVQTGEEGMPLSTIREVAVLRHLETFEHPNVVRLF DVCTVSRTDRETKLTLVFEHVDQDLTTYLDKVPPEGPVPTETIKDMMFQLLRGLDFLHSHRVVHRDLKPQNILVTSSGQIKL ADFGRLARIYSFQMALTSVVVTLWYRAPEVLLQSSYATPVDLWSVGCIFAEMFRRKPLFRGSSDVDQLGKILDVIGLPGEEED WPRDVALPRQAFHSKSAQPIEKFVTDIDELGKDLLKCLTFNPAKRISAYSALSHPYFQDLERCKENLDShLPPSQNTSELN TA

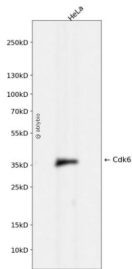
靶点信息

研究背景	The protein encoded by this gene is a member of the cyclin-dependent protein kinase (CDK) family. CDK family members are highly similar to the gene products of <i>Saccharomyces cerevisiae</i> cdc28, and <i>Schizosaccharomyces pombe</i> cdc2, and are known to be important regulators of cell cycle progression. This kinase is a catalytic subunit of the protein kinase complex that is important for cell cycle G1 phase progression and G1/S transition. The activity of this kinase first appears in mid-G1 phase, which is controlled by the regulatory subunits including D-type cyclins and members of INK4 family of CDK inhibitors. This kinase, as well as CDK4, has been shown to phosphorylate, and thus regulate the activity of, tumor suppressor protein Rb. Expression of this gene is up-regulated in some types of cancer. Multiple alternatively spliced variants, encoding the same protein, have been identified.
基因ID	1021
基因名	CDK6
Swiss	Q00534
别名	CDK6;MCPH12;PLSTIRE

产品验证



Immunohistochemical analysis of paraffin-embedded human lung cancer, using CDK6 Antibody.



Western blot analysis of Cdk6 expressed in HeLa using Cdk6 Rabbit mAb at 1:1000. Secondary antibody: HRP Goat Anti-Rabbit IgG (H+L) at 1:5000. Lysates/proteins: 30ug per lane. Blocking buffer: 5% non-fat dry milk in TBST. Detection: ECL Enhanced Kit. Exposure time: 120s.

实验步骤

访问官网浏览详情: www.ablybio.cn