

Alkaline phosphatase Rabbit mAb

货号: **AYM29744**

产品信息

反应	Human
宿主	Rabbit
克隆性	Monoclonal
预测反应	
应用	WB IHC
推荐浓度	WB: 1:500 - 1:2000 IHC: 1:50 - 1:200
理论分子量	56kDa
实测分子量	68kDa
形式	Liquid
保存条件	Store at -20°C. Avoid freeze / thaw cycles. Buffer: PBS with 0.75% BSA,50% glycerol,pH7.3.
偶联物	Unconjugated
阳性对照	HepG2
细胞定位	Cell membrane,GPI-anchor,Lipid-anchor
纯化	Affinity purification

抗原信息

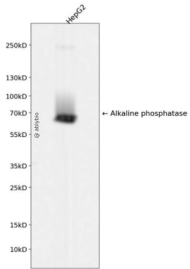
抗原信息	Recombinant fusion protein corresponding to Human Alkaline phosphatase.
序列	VIPAEENPAFWNRQAAEALDAAKLLQPIQKVAKNLILFLGDGLGVPTVTATRILKGQKNGKLGPEPLAMDRFPYLALSKTYNVDRQVPDSAATATAYLCGVKANFQTIGLSAAARFNQCNTTRGNEVISVMNRAKQAGKSVGVTTRVQHASPAGTYAHTVNRNWYSDADMPASARQEGCQDIATQLISNMDIDVILGGGRKYMFPMPGTPDPEYPADA

靶点信息

研究背景	There are at least four distinct but related alkaline phosphatases: intestinal, placental, placental-like, and liver/bone/kidney (tissue non-specific). The intestinal alkaline phosphatase gene encodes a digestive brush border enzyme. This enzyme is a component of the gut mucosal defense system and is thought to function in the detoxification of lipopolysaccharide, and in the prevention of bacterial translocation in the gut.
基因ID	248

基因名	ALPI
Swiss	P09923
别名	ALPI;IAP

产品验证



Western blot analysis of Alkaline phosphatase expressed in HepG2 using Alkaline phosphatase Rabbit mAb at 1:1000. Secondary antibody: HRP Goat Anti-Rabbit IgG (H+L) at 1:5000. Lysates/proteins: 30ug per lane. Blocking buffer: 5% non-fat dry milk in TBST. Detection: ECL Enhanced Kit. Exposure time: 12 0s.

实验步骤

访问官网浏览详情: www.ablybio.cn