

eIF2B epsilon Rabbit mAb

货号: **AYM29742**

产品信息

反应	Human
宿主	Rabbit
克隆性	Monoclonal
预测反应	
应用	WB IHC IF/ICC
推荐浓度	WB: 1:500 - 1:2000 IHC: 1:50 - 1:200 IF/ICC: 1:50 - 1:200
理论分子量	80kDa
实测分子量	80kDa
形式	Liquid
保存条件	Store at -20°C. Avoid freeze / thaw cycles. Buffer: PBS with 0.75% BSA,50% glycerol,pH7.3.
偶联物	Unconjugated
阳性对照	HeLa,HT-29,U-87MG
细胞定位	cytoplasm,cytosol,eukaryotic translation initiation factor 2B complex,nucleus
纯化	Affinity purification

抗原信息

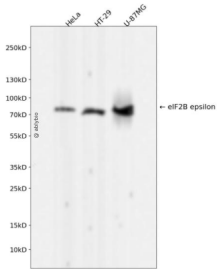
抗原信息	Recombinant fusion protein corresponding to Human eIF2B epsilon.
序列	MAAPVVAPPGVVVSRANKRSGAGPGGSGGGGARGAEIEPPPLQAVLVADSFDRRFFPISKDQPRVLLPLANVALIDYTL EFLTATGVQETFVFCWCAA

靶点信息

研究背景	This gene encodes one of five subunits of eukaryotic translation initiation factor 2B (EIF2B), a GTP exchange factor for eukaryotic initiation factor 2 and an essential regulator for protein synthesis. Mutations in this gene and the genes encoding other EIF2B subunits have been associated with leukoencephalopathy with vanishing white matter. [provided by RefSeq, Nov 2009]
基因ID	8893

基因名	EIF2B5
Swiss	Q13144
别名	CACH; CLE; EIF-2B; EIF2Bepsilon; LVWM

产品验证



Western blot analysis of eIF2B epsilon expressed in HeLa, HT-29, U-87MG using eIF2B epsilon Rabbit mAb at 1:1000. Secondary antibody: HRP Goat Anti-Rabbit IgG (H+L) at 1:5000. Lysates/proteins: 30 ug per lane. Blocking buffer: 5% non-fat dry milk in TBST. Detection: ECL Enhanced Kit. Exposure time: 120s.

实验步骤

访问官网浏览详情: www.ablybio.cn