

SERPINA1 Rabbit mAb

货号: **AYM29730**

产品信息

反应	Human
宿主	Rabbit
克隆性	Monoclonal
预测反应	
应用	WB IHC IF/ICC IP
推荐浓度	WB: 1:500 - 1:2000 IHC: 1:50 - 1:200 IF/ICC: 1:50 - 1:200 IP: 1:20 - 1:50
理论分子量	34kDa/40kDa/46kDa
实测分子量	51kDa
形式	Liquid
保存条件	Store at -20°C. Avoid freeze / thaw cycles. Buffer: PBS with 0.75% BSA,50% glycerol,pH7.3.
偶联物	Unconjugated
阳性对照	HepG2,293T,Mouse lung
细胞定位	Endoplasmic reticulum,Secreted,extracellular matrix,extracellular space
纯化	Affinity purification

抗原信息

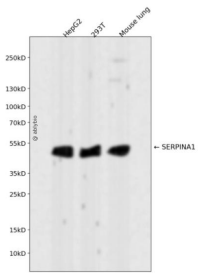
抗原信息	Recombinant fusion protein corresponding to Human SERPINA1.
序列	EDPQGDAAQKTDTSHHQDHPFNKIPNLAEFASFSLYRQLAHQSNSTNIFFSPVSIATAFAMLSLGTKADTHDEILEGLN FNLTEIPEAQIHEGFQELLRTLNPDSQLQLTTGNGFLFLSEGLKLVDFLEDVKKLYHSEAFTVNFVGDTEEAKKQINDYVEK GTQGKIVDLVKELDRDVFALVNYIFFKKGWERPFVVDTEEEDFHVDQVTTVKVPMKRLGMFNIQHCKKLSWVLLM KYLGNATAIFFLPDEGKLQHLENELTHDIITKFLNEDRRSASLHLPKL

靶点信息

研究背景	The protein encoded by this gene is secreted and is a serine protease inhibitor whose targets include elastase, plasmin, thrombin, trypsin, chymotrypsin, and plasminogen activator. Defects in this gene can cause emphysema or liver disease. Several transcript variants encoding the same protein have been found for this gene.
------	--

基因ID	5265
基因名	SERPINA1
Swiss	P01009
别名	SERPINA1;A1A;A1AT;AAT;PI;PI1;PRO2275;alpha1AT

产品验证



Western blot analysis of SERPINA1 expressed in HepG2,293T,Mouse lung using SERPINA1 Rabbit mAb at 1:1000. Secondary antibody: HRP Goat Anti-Rabbit IgG (H+L) at 1:5000. Lysates/proteins: 30ug per lane. Blocking buffer: 5% non-fat dry milk in TBST. Detection: ECL Enhanced Kit. Exposure time: 120s.

实验步骤

访问官网浏览详情: www.ablybio.cn